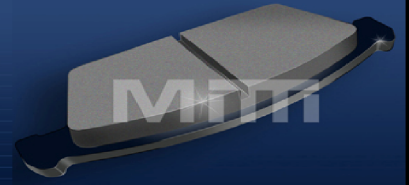
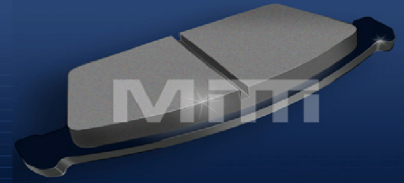


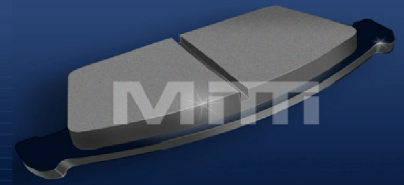
D#	FMSI #	Make	Model	F/R	Year
D1049	7952	Acura	TL 6 Speed	F	2004-08
D1090	7995	Acura	RL	R	2005-08
D1091	7996	Acura	RL	F	2005-08
D1280	8396	Acura	MDX	F	2007-08
D1281	8397	Acura	MDX	R	2007-08
D365	Use 537	Acura	Legend	R	1989-90
D1089	7994	Acura/Honda	RDX/CR-V/Odyssey	F	2005-08
D334	7229	Acura/Honda	Integra/accord	F	1986-89
D341	Use 409	Acura/Honda	Legend/accord	F	1986-87
D364	7233	Acura/Honda	Integra/accord	R	1986-89
D374	7233	Acura/Honda	Integra/Prelude	R	1988-91
D409	7445	Acura/Honda	Integra/Civic/Prelude	F	1991-93
D465A	7345	Acura/Honda	CL/accord (FMSI 7345 .720" Friction)	F	1992-00
D564	Use 374	Acura/Honda	Integra/Civic/Civic Del Sol	R	1993-01
D617	7493	Acura/Honda	Integra/Civic	F	1994-01
D621	7497	Acura/Honda	RSX/Civic/Fit/Fit Sport	F	1993-08
D743	Use 364	Acura/Honda	Integra/accord	R	1986-89
D787	7656	Acura/Honda	CL/RL/TL/TSX/accord (Man. Trans)	F	1999-08
D829	7702	Acura/Honda	RSX/S2000/Civic SI	F	2000-08
D865	7740	Acura/Honda	MDX/Odyssey/Pilot	R	2001-08
D536	7418	Acura/Honda/Isuzu	CL/RDX/RI/TL/Vigor/accord/CRV/Element/Oasis	R	1994-08
D580	7460	Acura/Honda/Isuzu	SLX/Passport/Rodeo-Trooper	R	1992-04
D537	7418	Acura/Honda/Suzuki	CL/RSX/TL/TSX/Vigor/accord/Civic/Prelude/S2000/SX4	R	1992-08
D342	7236	Acura/Hyundai	Legend/Sonata	R	1988-98
D855	7566	Acura/Infinity/Nissan	MDX/Q45/QX4/Quest (FMSI 7566 .645" Friction)	F	2000-06
D691	7566	Acura/Nissan	MDX/Pathfinder/Quest/X-Trail	F	1996-08
D563	7442	Acura/Subaru	TL/Impreza/Legacy	F	1990-04
D228	7144	Alfa-Romeo/Audi	164/A4/A6/A8/Series100/200/5000	R	1990-99
D1025	Use 788	AM General	Hummer H1 12100 lb GVW	F/ R	2002-06
D1119	8225	AM General	Hummer H3	F	2006-08
D1120	8226	AM General	Hummer H3	R	2006-08
D651	7531	AM General	Hummer H1	F/ R	1993-98
D788	7658	AM General	Hummer H1	F/ R	1998-06
D203	7122	AMC/Jeep	Trucks	F	1990-92



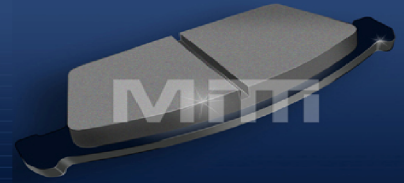
D#	FMSI #	Make	Model	F/R	Year
D1018	7921	Audi	S4/RS4/RS5/RS6/A8/A4/Quattro	R	2003-07
D1023	Use 340A	Audi	TT Quattro	R	2004
D1024	7928	Audi	A8 Quattro	F	2004-06
D1024A	7928	Audi	Ditto (With 2 Attached WW Sensors. Oval Plug Male 6011)	F	2004-06
D1111	Use 915B	Audi	A4/A6/Quattro	F	2005-08
D1111A	Use 915C	Audi	Ditto (With 2 Attached WW Sensors)	F	2002-08
D1112	Use 340	Audi	A4/Cabriolet/Quattro/Avant	R	2004-06
D1115	Use 682	Audi	TT 6 Cylinder/TT Quattro	F	2005-06
D1115A	Use 682A	Audi	Ditto (With 2 Clip on WW Sensors)	F	2005-06
D1117	Use 1024	Audi	A8 6.0 V12 / Quattro/S6/S8	F	2005-08
D1117A	Use 1024A	Audi	Ditto (With 2 Attached WW Sensors)	F	2005-08
D1266	Use 1029	Audi	RS4 (8 Pads per set)	F	2007-08
D1266A	Use 1029A	Audi	Ditto (With 2 Attached WW Sensors. Oval Plug Male 6011)	F	2007-08
D1319	Use 1107	Audi	TT 2.0 Turbo	F	2008
D1319A	Use 1107A	Audi	TT 2.0 Turbo (With 1 Attached WW Sensor 6009)	F	2008
D1359	Use 1111	Audi	A3/TT/TT Quattro	F	2008
D290	7143	Audi	80/90/90 Quattro	F	1988-92
D290A	7143	Audi	80/90/90 Quattro (With 2 Attached WW Sensors 6005)	F	1988-92
D362	Use 419	Audi	5000 Series	F	1986-89
D362A	Use 419B	Audi	Ditto (With 2 Attached WW Sensors 6006)	F	1986-89
D394C	7397	Audi	200 Series (With 2 Clip on WW Sensors TBA)	F	1989-91
D419	7352	Audi	A6/A8/V8 Quattro-80/90/200 Series- S4/S6	F	1991-98
D419A	7352	Audi	Ditto (With 2 Attached WW Sensors. Short Round Plug 6010)	F	1991-98
D419B	7352	Audi	Ditto (With 2 Attached WW Sensors. Long Round Plug 6006)	F	1991-98
D419C	7352	Audi	D419+ Wire H.Down clips/screws attached to outer pads	F	1991-98
D419D	7352	Audi	D419A+ Wire H.Down clips/screws attached to outer pads	F	1991-98
D419E	7352	Audi	D419B+ Wire H.Down clips/screws attached to outer pads	F	1991-98
D594	7473/7770	Audi	S8/S8 Quattro	F	2000-03
D594A	7473/7770	Audi	S8/S8 Quattro (With 2 Attached WW Sensors TBA)	F	2000-03
D851	Use 228	Audi	A8 Quattro	R	2000
D894	Use 340A	Audi	A8/S8	R	2000-03
D915B	7796	Audi	A4/S4 (.760: Friction)(CTD3162 H/W)	F	2002-08
D915C	7796	Audi	Ditto (With 2 Attached Wire Wear Sensors 6008)	F	2002-08
D394B	7284/7397	Audi/BMW	200 Series/M3/M5/5/7Series(.760" Friction)	F	1989-06



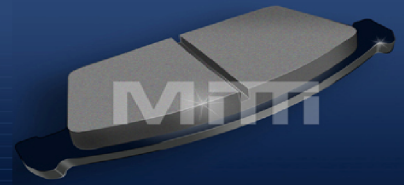
D#	FMSI #	Make	Model	F/R	Year
D682	7561	Audi/BMW/Chrysler/MB/VW	TT/750/Z8/CfireSRT6/CLK55/SLK32AMG/S500AWD/Golf R32	F	1995-06
D682A	7561	Audi/BMW/Chrysler/MB/VW	Ditto (With 2 Clip on WW Sensors TBA)	F	1995-06
D1014	7878/8366	Audi/Porsche/Volkswagen	Q7/Cayenne/Touareg TDI	F	2004-08
D1014A	7878/8366	Audi/Porsche/Volkswagen	Ditto (With 2 Clip on WW Sensors 6049)	F	2004-08
D978	7908/7879	Audi/Porsche/Volkswagen	Q7/Cayenne/Touareg (.605" Friction)	R	2003-08
D840	7711/7715	Audi/Saab/Volkswagen/Volvo	A4/A6/A8/9-5/Passat/C70	F	2000-08
D840A	7711/7715	Audi/Saab/Volkswagen/Volvo	Ditto (With 2 Attached WW Ss Oval Plug Female 6009)	F	2000-08
D915A	7796	Audi/Volkswaen	Ditto (With 2 Attached Wire Wear Sensors 6008)	F	2002-08
D1017	Use 340A	Audi/Volkswagen	A6/A6 Quattro/TT/Beetle/Passat	R	2003-08
D1107	8212	Audi/Volkswagen	A3/Beetle/Eos/Golg GTI/Jetta/Passat/Rabbit	F	2006-08
D1107A	8212	Audi/Volkswagen	Ditto (With 1 Attached WW Sensor. Oval Plug Female 6009)	F	2006-08
D1108	8213	Audi/Volkswagen	A3/A4/TT/ Quattro/A6/Beetle/Eos/Golf GTI/Jetta/Passat/Rabbit	R	2006-08
D340A	7335/7920	Audi/Volkswagen	A4/A6/A8/TT Quattro/Beetle/Golf/Jetta/Passat(FMSI 7335 .660" Fr.)	R	1989-06
D555	7434	Audi/Volkswagen	A4,A6,A8,S4/Passat(No WW sensor)	F	1993-99
D555A	7434	Audi/Volkswagen	Ditto (With 2 Attached WW sensors Oval Plug Male 6008)	F	1993-99
D555B	7434	Audi/Volkswagen	Ditto (With 2 Attached WW sensors Round Plug 6010)	F	1993-99
D555C	7434	Audi/Volkswagen	ditto (With 2 Attached WW sensors Oval Plug Female 6009)	F	1993-99
D687	7434/7710	Audi/Volkswagen	TT/Beetle/Golf/Jetta (No WW sensor)	F	1996-08
D687A	7434/7710	Audi/Volkswagen	Ditto (With 1 Attached WW Sensor. Oval Plug Female 6009)	F	1996-08
D768	7709	Audi/Volkswagen	A3/New Beetle/Golf/Jetta	F	1998-07
D768A	7709	Audi/Volkswagen	Ditto (With 1 Attached WW Sensor Oval Plug Female 6009)	F	1998-07
D839	7714	Audi/Volkswagen	A4/A6/A8/S4/S6/Quattro/Passat (8 Pads per set)	F	2000-04
D839A	7714	Audi/Volkswagen	Ditto (With 2 Attached WW Sensors Round Plug Male 6010)	F	2000-04
D839B	7714	Audi/Volkswagen	Ditto (With 2 Attached WW Sensors Oval Plug Male 6011)	F	2000-04
D912	7725	Audi/Volkswagen	A4/A6/A8/S4/S6/Quattro/Passat (8 Pads per set)	F	2000-06
D912A	7725	Audi/Volkswagen	Ditto (With 2 Attached WW Sensors Round Plug Male 6010)	F	2000-06
D912B	7725	Audi/Volkswagen	Ditto (With 2 Attached WW Sensors Oval Plug Male 6011)	F	2000-05
D915	7796	Audi/Volkswagen	A4/A6/A8 Quattro/TT Quattro/Passat/R32 (.760" Friction)(CTD3140 H/W)	F	2002-08
D840B	7711/7715	Audi/Volkswagen/Volvo	Ditto (With 2 Attached WW Sensors Round Plug 6010)	F	2000-08
D840C	7711/7715	Audi/Volkswagen/Volvo	Ditto (With 2 Attached WW Ss Oval Plug Male 6008)	F	2000-08
D1029	7934/8372	Audi/VW	A8 Quattro/RS 6/ Phaeton (8 Pads per set. 360mm rotors)	F	2002-08
D1029A	7934/8372	Audi/VW	Ditto (With 2 Attached WW Sensors. Oval Plug Male 6011)	F	2004-08
D1042	Use 683	BMW	525/525i/525Xi/530i/530Xi/X5	R	2004-08
D1060	7842	BMW	Mini Cooper, Mini Cooper S	R	2004-08



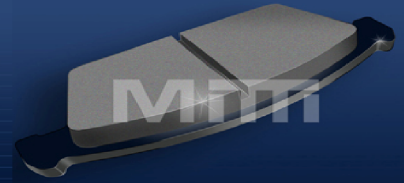
D#	FMSI #	Make	Model	F/R	Year
D1060A	7842	BMW	Ditto (With 1 Clip on WW Sensor 6048)	R	2004-08
D1061	Use 725	BMW	128i/325i/325Xi/330i/330Xi/525i Manual Transmission	F	2004-08
D1170	7427	BMW	330i/335i	R	2006-08
D1170A	7427	BMW	Ditto (With 1 Clip on WW Sensor TBA)	R	2006-08
D1171	7286	BMW	325i	R	2006
D1171A	7286	BMW	Ditto (With 1 Clip on WW Sensor TBA)	R	2006
D1239	Use 692	BMW	528i/530i/540i	R	2000-03
D1260	Use 918	BMW	530i/650i	F	2006-08
D1260A	Use 918A	BMW	650i (With 1 Clip on WW Sensor)	F	2006-08
D1267	7286	BMW	128i/135i/325i/328i	R	2007-08
D1267A	7286	BMW	Ditto (With 1 Clip on WW Sensor TBA)	R	2007-08
D279	7182	BMW	318/325	R	1991-01
D279A	7182	BMW	Ditto (With 1 Clip on WW Sensor 6031)	R	1991-01
D394D	7284	BMW	M3/M5/525/530/540 Series (With 1 Clip on WW Sensor TBA)	F	1991-06
D396	7286	BMW	M3/M5/Z3/318/325/525/540 Series	R	1998-02
D396A	7286	BMW	Ditto (With 1 Clip on WW Sensor 6034)	R	1998-02
D548	7427	BMW	850 Series/2002 M3	R	1991-02
D558	7437	BMW	Z3/318/325/328	F	1991-03
D558A	7437	BMW	Z3/318/325/328 (With 1 Clip on WW Sensor TBA)	F	1991-03
D639	7517	BMW	840/850 Series	F	1994-97
D639A	7517	BMW	Ditto (With 1 Clip on WW Sensor 6030)	F	1994-97
D681	7560	BMW	M3/M3 CSL/X5/540 Series/740 Series	F	1995-06
D681A	7560	BMW	Ditto (With 1 Clip on WW Sensor 6038 Total length 22.4")	F	1995-06
D681B	7560	BMW	Ditto (With 1 Clip on WW Sensor 6044 Total length 31.3")	F	1995-06
D692	7286	BMW	M3/M5/Z3/318/325/525/540 Series	R	1993-02
D692A	7286	BMW	Ditto (With 1 Clip on WW Sensor 6031)	R	1993-02
D725	7592	BMW	330/525/528	F	1997-02
D781	7649	BMW	Z4/318/325/328	F	1991-07
D781A	7649	BMW	Z4/318/325/328 (With 1 Clip on WW Sensor 6033)	F	1991-07
D809	Use 279	BMW	M-6	R	1987-88
D809A	Use 279A	BMW	Ditto (With 1 Clip on WW Sensor 6031)	R	1987-88
D918	7799	BMW	M3/335i/525i/525Xi/530/530Xi/545i/550i/745i/745Li/750Li/760 Series	F	2002-08
D918A	7799	BMW	Ditto (With 1 Clip on WW Sensor 6035)	F	2002-08
D919	7820	BMW	530/545i/550i/745i/745Li/750Li/760 Series M6	R	2002-08



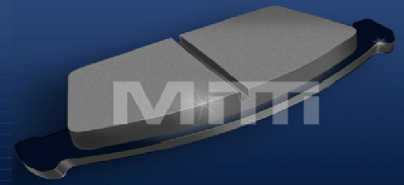
D#	FMSI #	Make	Model	F/R	Year
D919A	7820	BMW	Ditto (With 1 Clip on WW Sensor 6037)	R	2002-08
D920	7821	BMW	X-5	F	2002-06
D920A	7821	BMW	Ditto (With 1 Clip on WW Sensor 6044)	F	2002-06
D939	7841	BMW	Mini Cooper, Mini Cooper S	F	2002-08
D939A	7841	BMW	Ditto (With 1 Clip on WW Sensor 6047)	F	2002-08
D940	7842	BMW	Mini Cooper, Mini Cooper S	R	2002-04
D946	7592	BMW	330/M3/M3 Competition/X3/Z4 M Roadster	F	2002-08
D946A	7592	BMW	Ditto (With 1 Clip on WW Sensor 6045 Total Length 165mm. 6.5")	F	2002-08
D946B	7592	BMW	Ditto (With 1 Clip on WW Sensor 6033 Total Length 673mm. 26.5")	F	2002-08
D947	Use 725	BMW	525	F	2002-04
D493	7601	BMW/Land Rover	318/325/Discovery/Range Rover	F/ R	1983-02
D493A	7601	BMW/Land Rover	Ditto (With 1 Attached WW Sensor 6032)	F/ R	1983-02
D683	7427	BMW/Land Rover	330/525i/X5/740/750 Series/X3/Z4 M Roadster/Range Rover	R	1995-08
D683A	7427	BMW/Land Rover	Ditto (With 1 Clip on WW Sensor 6039)	R	1995-08
D278	Use 493	BMW/Mercedes-Benz	318/190D	F	1984-89
D763	7631	BMW/Saab	Z4/325 Series/9-5 Series	R	2000-08
D763A	7631	BMW/Saab	Ditto (With 1 Clip on WW Sensor 6043)	R	2000-08
D1224	Use 818	Buick/Cadillac/Chev/Pontiac	Century/LeSabre/P.Ave/Regal/DeVille/Impala/Venture/Bonn./Gprix	F	2000-07
D1169	8282	Buick/Chev Truck/Isuzu/Saab	Rainier/SSR/Terrazza/Trailblazer/Ascender/9-7X (.700" Friction)	F	2006-08
D1093	7999	Buick/Chev/Pontiac/Saturn	Terraza/Uplander/Montana/Relay-1/2/3	R	2005-07
D814	7387	Buick/Chevrolet	Rendezvous/Impala/Monte Carlo	R	2000-08
D699	7574	Buick/Chevrolet/GM	LeSabre/Impala/Venture-Transport	F	1997-05
D844	7720	Buick/Chevrolet/Pontiac	Rendezvous/Venture/Aztek	F	2001-07
D1075	7980	Buick/Chevrolet/Pontiac/Saturn	Allure/LaCrosse/Uplander/Terraza/Gran Prix/Relay-1/2/3	F	2005-08
D1076	7981	Buick/Pontiac	LeSabre/Bonneville	F	2004-05
D999	7900	Buick/Pontiac	Allure/Enclave/LaCrosse/Grand Prix	R	2004-08
D1019	7922	Cadillac	CTS/SRX (FMSI 7922 .540" Friction)	F	2004-08
D1020	7924	Cadillac	SRX (FMSI 7924 .610" Friction)	R	2004-08
D1020A	7925	Cadillac	CTS/STS/SRX w / performance brakes (FMSI 7925 .650" Fr)	R	2004-08
D1331	8443	Cadillac	CTS 3.6L V6	F	2008
D1332	8444	Cadillac	CTS 3.6L VVT	F	2008
D1337	8448	Cadillac	CTS	R	2008
D709A	7582	Cadillac	Catera (FMSI 7582 .657" Friction)	R	1997-01
D720	7588	Cadillac	Catera	F	1997-01



D#	FMSI #	Make	Model	F/R	Year
D720A	7588	Cadillac	Catera (With 2 Clip on WW Sensors 6019)	F	1997-01
D753	7621	Cadillac	Seville	F	1998-03
D753A	7621	Cadillac	Ditto (With 2 Clip on WW Sensors 6003)	F	1998-03
D754	7622	Cadillac	Seville	R	1998-02
D754A	7622	Cadillac	Ditto (With 2 Clip on WW Sensors 6004)	R	1998-02
D850	7726	Cadillac	Seville (New Friction Shape)	F	1998-02
D850A	7726	Cadillac	Seville (New Friction Shape) (With 2 Clip on WW Sensors 6003)	F	1998-02
D1172	8283	Cadillac/Buick	DTS/Lucerne	R	2006-08
D1092	7997	Cadillac/Chev/GMC Truck	Escalade/Suburban/Tahoe/Trailblazer/Yukon/C1500/K1500/Sierra 1500	F	2005-08
D784	7652/8454	Cadillac/Chev/GMC//Hummer	DevilleD/TS/Express3500/Sierra/Savana/Silverado 9900GVW/H2	F	1999-08
D732	7600/8285	Cadillac/Chevrolet	XLR with HD Brakes/Corvette	R	1997-08
D974	7881	Cadillac/Chevrolet	EXT/Avalanche (FMSI 7881/7989 .660" Friction)	R	2003-08
D975	7707	Cadillac/Chevrolet/GMC Tr	Escalade/Surburban 1500/Sierra 1500	R	2003-06
D1194	8312	Cadillac/Chevrolet/GMC Truck	Escalade/Suburban/Tahoe/Yukon	R	2007-08
D731	7599/8230	Cadillac/Chevrolet/Pontiac	XLR/Corvette/GTO	F	1997-08
D749	7618	Cadillac/Chevrolet/Pontiac	XLR/Camaro/Corvette/Firebird	F	1998-05
D1053	7958	Cadillac/Dodge/Jeep	CTS - V/STS HD/Charger SRT8/Magnum SRT8/G.Cherokee SRT8	R	2004-08
D1050	Use 1001A	Cadillac/Ford	CTS "V" Series/GT/Mustang Shelby GT500	F	2004-08
D1001A	7902	Cadillac/Ford/Mitsubishi	CTS "V" Series/GT/Lancer Evo VIII (FMSI 7902/7953 .590" Fr)	F	2003-07
D1019A	7923	Cadillac/Pontiac	CTS Perf./SRX/Bonneville/performance brakes/STS (.575" Fr)	F	2004-08
D921	7822	Cadillac/Pontiac	CTS/CTS Sport/STS/Gran Prix V8	F	2003-08
D922	7823	Cadillac/Pontiac	CTS/CTS Sport/Grand Am (FMSI 7823 .605" Friction)	R	2003-08
D922A	8207	Cadillac/Pontiac	CTS/STS/Grand Prix/STS (FMSI 8207 .515" Friction)	R	2005-08
D1160	8270	Chev Truck/Pontiac/Saturn	Malibu/Cobalt/HHR/G5GT/G6/Aura	F	2006-08
D153	7280	Chev/GMC	Trucks	F	1976-95
D392	Use 153	Chev/GMC	Trucks	F	1976-95
D1039	7943	Chev/GMC Tr/Isuzu/Pontiac	Colorado/Canyon/I280/290/350/370/G6 GT	F	2004-08
D834	7707	Chev/GMC/Cadillac	Yukon/Escalade	R	2000-03
D1264	8381	Chev/Pontiac/Saturn/Suzuki	Equinox/Torrent/Vue/XL7	F	2007-08
D1159F	8269	Chevrolet	Impala Police (SD Fleet Configuration)	F	2006-08
D1185	8302	Chevrolet	Corvette Z06 (12 Pads per set)	F	2006-08
D1185A	8303	Chevrolet	Corvette Z06 (8 Pads per set)	R	2006-08
D413	7689	Chevrolet	Corvette	R	1989-96
D628	7505	Chevrolet	Caprice/Impala	R	1994-96



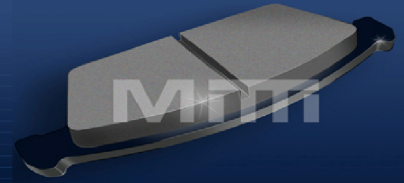
D#	FMSI #	Make	Model	F/R	Year
D699F	7574	Chevrolet	Impala Police (SD Fleet Configuration)	F	1997-05
D767	Use 154	Chevrolet	S-10 Pick-up Electric	F	1997-98
D8	727/7028A	Chevrolet	Corvette	F/ R	1966-82
D807	Use 556	Chevrolet	Tracker	F	1999-04
D913	7794	Chevrolet Truck/Saturn	Equinox/VUE	F	2002-07
D1159	8269	Chevrolet/Buick/Cadillac	Impala/Allure/Lucerne/Monte Carlo/DTS	F	2006-08
D797	7667	Chevrolet/Daewoo	Epica 2.0/Leganza/Nubira	F	1999-06
D412	7300	Chevrolet/Ford/Pontiac	Corvette/Mustang Cobra/Firebird	F	1988-04
D418	7305	Chevrolet/GEO/Suzuki	Sidekick/Tracker	F	1991-98
D451	7331	Chevrolet/Geo/Suzuki	Metro/Swift	F	1990-01
D556	7435	Chevrolet/Geo/Suzuki	Tracker/Sidekick	F	1992-03
D974A	7875	Chevrolet/GMC	Express/Savana (FMSI 7875 .790" Friction)	R	2003-08
D989	7891	Chevrolet/GMC	Express 3500/Savana w/DRW (Build to order only)	R	2003-08
D989F	7891	Chevrolet/GMC	Express 3500/Savana w/DRW (SD Fleet Configuration)	R	2003-08
D1032F	Use 769F	Chevrolet/GMC Truck	C5500/6500/7500	F	2002-04
D546F	7425	Chevrolet/GMC/Izuzu Truck	W4SO42/NPR (SD Fleet Configuration)	F	1992-97
D675F	Use 546F	Chevrolet/GMC/Izuzu Truck	W4SO42/NPR	F	1992-97
D1028	7932	Chevrolet/Pontiac/Saturn	Cobalt/Malibu/Malibu Maxx/HHR/Venture/G6/Solstice/Pursuit/Ion/Sky	F	2004-08
D1033	7937/8286	Chevrolet/Pontiac/Saturn	Cobalt/Malibu/Malibu Maxx/G5/G6 GT/Pursuit/Aura/Ion	R	2004-08
D956	7855	Chevrolet/Pontiac/Saturn	Cobalt/G5/Pursuit/Ion-1-2-3	F	2003-08
D1275	8391	Chevrolet/Pontiac/Saturn/Suzuki	Equinox/Torrent/Vue/XL7	R	2007-08
D1035	Use 797	Chevrolet/Pontiac/Suzuki	Aveo5/Opra/Wave/Forenza/Reno	F	2004-08
D1364	Use 1033	Chevrolet/Saturn	Malibu/Aura	R	2008
D1030	7935	Chevrolet/Suzuki	Epica/Verona	R	2004-06
D1031	7936	Chevrolet/Suzuki	Epica/Verona	F	2004-06
D1036	7939	Chevrolet/Suzuki	Opra/Forenza/Reno	R	2004-06
D988	7890	Chvrolet	S10	F	2003
D1059	7966	Chrysler	Voyager Mini Van - European Model Only	F	2000-04
D1326	8438	Chrysler	Town & Country	R	2008
D1327	Use 1273	Chrysler	Town & Country	F	2008
D415	Use 512	Chrysler	Le Baron New Yorker	R	1989-90
D512	7303	Chrysler	Le Baron New Yorker	R	1991
D521	Use 524	Chrysler	All Models - Wagons	F	1991-95
D522	7404	Chrysler	All Models - Wagons	F	1991-94



D#	FMSI #	Make	Model	F/R	Year
D524	7406	Chrysler	All Models - Wagons	F	1991-95
D559	Use 512	Chrysler	All Models LH Platform	R	1992-94
D591	7470	Chrysler	LH Platforms	F	1993-94
D642	7518	Chrysler	Neon-Mini Vans-LH Platforms	F	1995-00
D658	7438	Chrysler	All Models LH Platform	R	1995-06
D715	Use 751	Chrysler	Town & Country	R	1997
D751	7424	Chrysler	Town & Country	R	1998-00
D782	Use 658	Chrysler	All Models LH Platform/PT Cruiser	R	1998-08
D841	7716	Chrysler	PT Cruiser	F	2000-08
D841A	7716	Chrysler	PT Cruiser (With Turbo Abutment Hardware Kit)	F	2000-08
D997	7898	Chrysler	Pacifica/Town & Country	F	2003-08
D998	7899	Chrysler	Pacifica	R	2004-08
D522A	7404	Chrysler (Mexico only)	All Models - Wagons (Extra hardware)	F	1991-94
D524A	7406	Chrysler (Mexico only)	All Models - Wagons (Extra hardware)	F	1991-95
D1056	7962	Chrysler/Dodge	300/300C/Charger/Magnum	F	2005-08
D1057	7964	Chrysler/Dodge	300 Perf. Suspension/Charger/Magnum (FMSI 7964 .675" Friction)	R	2005-08
D1057A	Use 1057	Chrysler/Dodge	300/Magnum(Touring Suspension)/Charger	R	2005-08
D1058	7965/8236	Chrysler/Dodge	300 Performance / Heavy Duty/Charger Daytona RT/Magnum	F	2005-08
D1285	Use 866	Chrysler/Dodge	Avenger/Sebring/Stratus	F	2007-08
D641	Use 658	Chrysler/Dodge	Cirrus/Stratus/Sebring	R	1995-06
D650	7530	Chrysler/Dodge	Cirrus/Stratus/Breeze	F	1995-96
D650A	7530	Chrysler/Dodge	Cirrus/Stratus/Breeze	F	1996-00
D730	7623	Chrysler/Dodge	Concorde/Intrepid/Neon/300M (.670"/.587" Friction)	F	1998-05
D869	7744	Chrysler/Dodge	300M/Sebring/Stratus	F	2001-06
D967	7869	Chrysler/Dodge	Aspen/Durango/Ram 1500/Van Wagon	R	2003-08
D1084	7991	Chrysler/Dodge Tr/Mitsubishi	Aspen/Dakota/Raider	F	2005-08
D866	7741	Chrysler/Dodge/Jeep/Mitsubishi	Sebring Coupe/Caliber SXT/Compass/Patriot/Eclipse/Galant/Outlander	F	2001-08
D258	Use 389	Chrysler/Dodge/Mitsubishi	Conquest/Starion	F	1984-89
D383	7272	Chrysler/Dodge/Mitsubishi	Sebring/Colt/Avenger/Eclipse/Galant/Sigma	R	1991-08
D868	7743	Chrysler/Dodge/Mitsubishi	Sebring/Avenger/Montero/Endeavor/Outlander	R	2001-08
D759	Use 658	Chrysler/Dodge/Plymouth	PT Cruiser/ Neon	R	1998-07
D484	7365	Chrysler/Eagle/Mitsubishi	Sebring/Talon/Colt/Mirage/Eclipse/Galant	F	1991-05
D779	7647	Chrysler/Mercedes-Benz	Crossfire/C230/SLK230/SLK280/240/C280/320 Series	R	1998-08
D853	7730/8215	Chrysler/Mercedes-Benz	Crossfire/E300/320/350/430 (FMSI 7730 .756" Friction)	F	1998-08

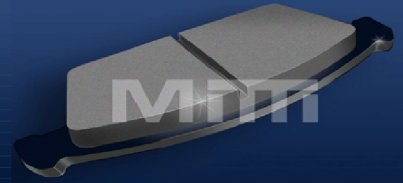
 MITI

Pastillas para Frenos

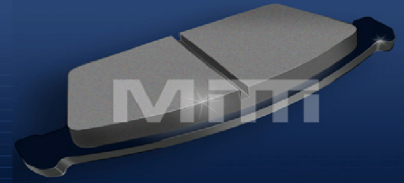


D#	FMSI #	Make	Model	F/R	Year
D853A	7730/8215	Chrysler/Mercedes-Benz	Ditto (With 2 Clip on WW Sensors 6014)	F	1998-08
D796	7666	Daewoo	Lanos	F	1999-01
D902	Use 797	Daewoo	Lanos	F	2000
D724	7591	Daewoo/Mitsubishi	Leganza/Nubira/Diamante	R	1997-04
D1057B	8292	Dodge	Charger/Magnum w H/D Brakes (FMSI 8292 .585" Friction)	R	2006-08
D1058F	7965/8236	Dodge	Charger Police (SD Fleet Configuration)	F	2005-06
D1077	7982	Dodge	RAM 1500/SRT-10 (FMSI 7982 .710" Friction)	R	2003-07
D1077A	Use 702A	Dodge	Ram 2500/3500 (FMSI 7865 .780" Friction)	R	2003-08
D1079	Use 897	Dodge	Durango	F	2005
D123	Use 269	Dodge	RAM 250	F	1977-83
D1298	Use 1149	Dodge	Charger/Magnum SRT8	F	2007-08
D1343	Use 868	Dodge	Caliber SRT 4	R	2008
D269	7179	Dodge	All Pick-ups/Vans	F	1986-98
D529	7410	Dodge	Dakota Truck	F	1991
D529A	7410	Dodge	Dakota Truck 4WD Only	F	1991
D592A	7471	Dodge	Viper (FMSI 7471 .665" Friction)	F	1992-02
D593	Use 529	Dodge	Dakota Truck	F	1993-98
D702A	7752	Dodge	Ram25/3500 (FMSI 7752 .780" Friction)	R	2001-04
D746	7616	Dodge	Durango SUV-Dakota	F	1998-00
D758	7627	Dodge	B150 Van	F	1998-00
D789	7659	Dodge	Ram Truck 1500	F	1999-01
D820	7616	Dodge	Dakota/Durango	F	2000-02
D821	Use 859	Dodge	Ram Truck 2500/3500	F	2000-01
D842	Use 758	Dodge	Ram 1/2 Ton 2WD	F	2000-01
D859	7694	Dodge	Ram 2WD 2500,3500 - 4WD All	F	2001-02
D86	Use 269	Dodge	RAM 100	F	1978-80
D878	Use 806	Dodge	Viper	R	2001-03
D962	7861	Dodge	Dakota	F	2003-04
D963	7862	Dodge	Dakota	R	2003-04
D965	7864	Dodge	Ram 1500/2500/3500	F	2003-08
D966	7866	Dodge	Ram 1500/Van Wagon (7866 .655" Friction)	F	2003-04
D966A	7774	Dodge	Ram/Durango (7774/7868 .690" Friction)	F	2003-04
D968	7684	Dodge	Viper/Viper SRT-10	F/ R	2003-08
D1054	7959	Dodge Truck	SRT-10	F	2004

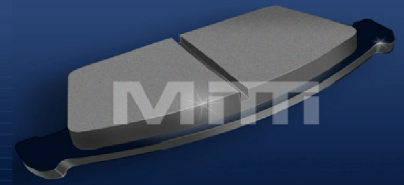
 MITI



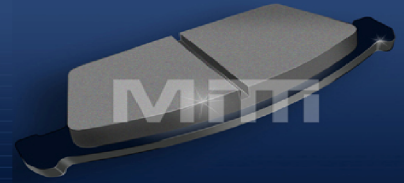
D#	FMSI #	Make	Model	F/R	Year
D1085	7992/8291	Dodge Truck	Ram SRT-10	F	2005-06
D1096	Use 702A	Dodge Truck	Ram 2500/3500 (FMSI 7752 and 7865 - .780" Friction)	R	2001-03
D1136	Use 949	Dodge Truck	Sprinter 2500 with 16" Wheels	F	2002-06
D1136A	Use 949A	Dodge Truck	Ditto (With 2 Clip on WW Sensors 6021)	F	2002-06
D1177	Use 950	Dodge Truck	Sprinter 2500	F	2003
D1177A	Use 950A	Dodge Truck	Ditto (With 2 Clip on WW Sensors 6022)	F	2003
D1316	8430	Dodge Truck	Sprinter 2500	F	2007-08
D1316A	8430	Dodge Truck	Sprinter 2500 (With Clip on WW Sensors 6054)	F	2007-08
D1317	8431	Dodge Truck	Sprinter 2500	R	2007-08
D1317A	8431	Dodge Truck	Sprinter 2500 (With Clip on WW Sensors 6054)	R	2007-08
D1318	8432	Dodge Truck	Sprinter 3500 DRW	R	2007-08
D1318A	8432	Dodge Truck	Sprinter 3500 DRW (With Clip on WW Sensors 6054)	R	2007-08
D1335	8446	Dodge Truck	Ram 4500/5500	F	2008
D655A	7677	Dodge Truck	Ram Van B2500/3500 (FMSI 7677 .705" Fr)	F	1998-03
D897	7774	Dodge Truck	Ram 1500	F	2002-03
D898	7775	Dodge Truck	Ram 1500/Durango	R	2002-05
D1229	Use 1006	Dodge Truck/Freightliner	Sprinter Van2500/3500 Teves Caliper 16" Wheels	R	2002-06
D1229A	Use 1006A	Dodge Truck/Freightliner	Ditto (With 2 Clip on WW Sensors 6022)	R	2002-06
D1268	8383	Dodge Truck/Workhorse	Sprinter 3500/W42 10,000 lb GVW	F	2005-08
D1268A	8383	Dodge Truck/Workhorse	Sprinter 3500/W42 10,000 lb GVW (With 2 Clip on WW Sensors 6054)	F	2005-08
D857	7733	Dodge/Chrysler	Caravan/Town & Country 4W Disc	F	2001-07
D858	7734	Dodge/Chrysler	Caravan/Town & Country	R	2001-07
D856	7732/7988	Dodge/Chrysler/Jeep	Caravan/Tn & Country Drum R/Liberty (.690" Friction)	F	2001-07
D532	7414	Dodge/Eagle/Mitsubishi	Steath/Talon/Eclipse/Sigma/Galant Ralliart	R	1991-08
D596	7474	Dodge/Eagle/Mitsubishi	Colt/Summit/Mirage	R	1993-96
D928	7829	Dodge/Freightliner/M-Benz	Sprinter 2500/3500 Van/G500/G55 AMG	R	2002-08
D928A	7829	Dodge/Freightliner/M-Benz	Ditto (With 2 Clip on WW Sensors 6022)	R	2002-08
D949	7848	Dodge/Freightliner/M-Benz	Sprinter Box Van (Bosch Caliper)	F	2002-06
D949A	7848	Dodge/Freightliner/M-Benz	Ditto (With 2 Clip on WW Sensors 6021)	F	2002-06
D949AF	7848	Dodge/Freightliner/M-Benz	Ditto (With 2 Clip on WW Sensors 6021)(SD Fleet Configuration)	F	2002-06
D949F	7848	Dodge/Freightliner/M-Benz	Sprinter Box Van (Bosch Caliper)(SD Fleet Configuration)	F	2002-06
D950	7849	Dodge/Freightliner/M-Benz	Sprinter Box Van (Teves Caliper)	F	2002-06
D950A	7849	Dodge/Freightliner/M-Benz	Ditto (With 2 Clip on WW Sensors 6022)	F	2002-06
D951	7850	Dodge/Freightliner/M-Benz	Sprinter Box Van (Teves Caliper)	R	2002-05



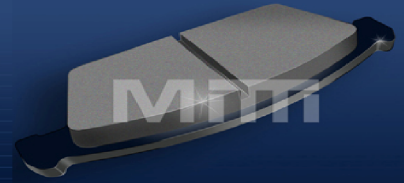
D#	FMSI #	Make	Model	F/R	Year
D951A	7850	Dodge/Freightliner/M-Benz	Ditto (With 2 Clip on WW Sensors 6022)	R	2002-05
D1149	8259	Dodge/Jeep	Charger SRT8/Grand Cherokee/G. Cherokee SRT8	F	2006-08
D1273	8389	Dodge/Jeep	Nitro/Liberty/Wrangler	F	2007-08
D1274	8390	Dodge/Jeep	Nitro/Liberty/Wrangler	R	2007-08
D1037	7940	Dodge/jeep/Mitsubishi	Avenger/Caliber RT/Compass/Patriot/Lancer/Outlander	R	2004-08
D531	7413	Dodge/Mitsubishi	Stealth/Sigma	F	1991-98
D631	7510	Dodge/Mitsubishi	Stealth/Sigma	R	1994-98
D271	Use 328	Dodge/Mitsubishi/Plymouth	Various models	F	1985-90
D328	7175	Dodge/Mitsubishi/Plymouth	Various models	F	1985-90
D535	Use 602	Dodge/Mitsubishi/Plymouth	Colt	F	1992-94
D602	7482	Dodge/Mitsubishi/Plymouth	Colt	F	1993-94
D633	7511	Dodge/Plymouth	Neon	F	1995-97
D567	7447	Eagle/Mitsubishi	Talon/Montero	R	1992-98
D533	Use 329	Eagle/Mitsubishi/Plymouth	Talon/Summit/Mirage/Galant/Eclipse/Laser/Colt	R	1991-94
D1132	Use 608	Ferrari	575 Maranello	R	2003-04
D810	7684	Ferrari/Jaguar	F40/F50/XJR/XK/XKR	F/ R	2000-06
D446	Use 608	Ferrari/Porsche	F355 Florano/911/928/944/968	F/ R	1991-98
D1047A	8445	Ford	Escape Hybrid (FMSI 8445 .670" Friction)	F	2008
D1081	7986	Ford	Mustang/Mustang Shelby GT 500	F	2005-08
D1082	7987	Ford	Mustang/Mustang Shelby GT 500	R	2005-08
D120	Use 450	Ford	F250/350	F	1976-88
D1339	8450	Ford	Focus	F	2008
D150	Use 346	Ford	Crown Victoria Police/Taxi	F	1979-81
D199	7501	Ford	Crown Victoria (Small Piston Clip)	F	1981-89
D199A	7501	Ford	Crown Victoria (Large Piston Clip)	F	1990-94
D205	Use 387	Ford	Ranger	F	1982-83
D224F	7141	Ford	M/H Truck/School Bus/F650/F750 (SD Fleet Configuration)	F/ R	1984-04
D236F	7149	Ford	M/H Truck/School Bus (SD Fleet Configuration)	F	1984-99
D249	Use 387	Ford	Ranger	F	1983-85
D346	7082	Ford	Crown Victoria Police	F	1981-93
D360	Use 375	Ford	E/F 150	F	1988-91
D375	7264	Ford	E/F 150	F	1988-93
D387	7125	Ford	Aerostar - Ranger	F	1987-93
D402	7291	Ford	Festiva	F	1988-93



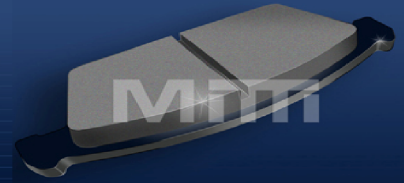
D#	FMSI #	Make	Model	F/R	Year
D411	7299	Ford	F450 Superduty (Build to order only)	F	1988-06
D411F	7299	Ford	F450 Superduty (SD Fleet Configuration)	F	1988-06
D417	7304	Ford	Thunderbird	F	1989-92
D431	7379	Ford	Mustang	F	1990-93
D450	7330	Ford	F250/350	F	1989-94
D499	Use 199	Ford	Crown Victoria (Small Piston Clip)	F	1981-89
D499A	Use 199A	Ford	Crown Victoria (Large Piston Clip)	F	1990-94
D50	788	Ford	E/F 150	F	1975-85
D544	7424	Ford	Crown Victoria	R	1992-95
D557	7436	Ford	F 250/350	F	1992-94
D600	7478	Ford	Mustang-Thunderbird	F	1993-98
D607	Use 654	Ford	Aerostar	F	1993-97
D626	Use 632	Ford	E/F 150	F	1994
D627	7524	Ford	Mustang Cobra (FMSI 7524 .591" Thick)	R	1995-04
D627A	7504	Ford	Mustang (FMSI 7504 .673" Thickness)	R	1994-04
D632	7503	Ford	E/F 150	F	1994-03
D654	7534	Ford	Explorer-Ranger	F	1994
D656	Use 601	Ford	Windstar	F	1995-99
D662	7542	Ford	Crown Victoria Police	R	1992-95
D664	7543	Ford	Windstar	R	1995-02
D667	7545	Ford	Explorer	R	1995-00
D679	7558	Ford	F 150 Pick-Up	F	1996-04
D756	7625	Ford	F 250/350 Super Duty	F	1998-01
D756F	Use 824F	Ford	F 250/350 Super Duty	F	1998-01
D757	7626	Ford	F 250/350 Super Duty	R	1998-05
D777	7644	Ford	F450/550 Super Duty (Build to order only)	F/ R	1999-06
D777F	7644	Ford	F450/550 Super Duty (SD Fleet Configuration)	F/ R	1999-06
D802	7673	Ford	E 250/350	R	1999-07
D802F	7673	Ford	E 250/350 School Bus/Ambulance/Fire Truck(SD Fleet Configuration)	R	1999-07
D803	7674	Ford	Windstar	F	1999-03
D804	7675	Ford	Mustang	F	1999-04
D816	7690	Ford	Focus	F	2000-04
D824	7625	Ford	Excursion/F350	F	2000-05
D824F	7625	Ford	Excursion/F350 (SD Fleet Configuration)	F	2000-05



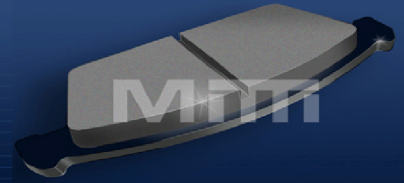
D#	FMSI #	Make	Model	F/R	Year
D886	7763	Ford	Focus	R	2001-07
D931F	7834	Ford	Crown Victoria/Mercury Grand M Police (SD Fleet Configuration)	F	2003-08
D970	7871	Ford	Focus/Focus SVT	F	2002-04
D610	7489	Ford /Lincoln/Mercury	Taurus/Continental/Sable	R	1993-07
D1011	Use 1083	Ford Truck	F150	F	2004-05
D1045	7948	Ford Truck	E 150 Econoline	F	2004-07
D1046	7949	Ford Truck	E 150 Econoline	R	2004-07
D1066F	7972	Ford Truck	F450/550 (SD Fleet Configuration)	F/ R	2005-08
D1067	7973	Ford Truck	F250/350 Heavy Duty	R	2005-08
D1068	7973	Ford Truck	F250/350 Light Duty	R	2005-07
D1068A	7973	Ford Truck	F250/350 Light Duty (With B version of Abutment Hardware Kit)	R	2005-07
D1069	7974	Ford Truck	F250/350	F	2005-07
D1069A	7974	Ford Truck	F250/350 (With DRW Abutment Hardware Kit)	F	2005-08
D1069A F	7974	Ford Truck	F250/350 (SD Fleet Configuration) (With DRW Abutment Hardware Kit)	F	2005-08
D1069F	7974	Ford Truck	F250/350 (SD Fleet Configuration)	F	2005-07
D1158	8268	Ford Truck	Explorer/Sport Trac	F	2006-08
D1328	8440	Ford Truck	E150	F	2008
D1329	8441	Ford Truck	E150 (Inners/Outers with different Friction Profiles and Thickness)	R	2008
D1330	8442	Ford Truck	E 450 Super Duty	R	2008
D1333	Use 1069	Ford Truck	F-250 Super Duty	F	2008
D1334	Use 1067	Ford Truck	F-250 Super Duty	R	2008
D1353	Use 1066	Ford Truck	F-450 Super Duty	F/ R	2008
D327	Use 379F	Ford Truck	CF-6000/7000/8000 Cargo	F	1986-88
D379F	7814	Ford Truck	CF-6000/7000/8000 Cargo (SD Fleet Configuration)	F	1988-89
D655	7535	Ford Truck	E/F 250/350/450 (FMSI 7535 .735" Friction)	F	1995-07
D655F	7535	Ford Truck	Ditto + School Bus/Ambulance/Fire Tr (SD Fleet Configuration)	F	1995-07
D1012	7916	Ford Truck/Lincoln	F150/Mark LT	R	2004-08
D1083	7915	Ford Truck/Lincoln	F150 (D1011 With cross drilled backing plates)/Mark LT	F	2005-08
D849	7676	Ford/Jaguar/Lincoln	Thunderbird/S-Type/LS	F	2000-06
D849A	7676	Ford/Jaguar/Lincoln	Thunderbird/S-Type/LS(Loose Hardware attached)	F	2000-06
D944	7845	Ford/Jaguar/Lincoln	Thunderbird/S Type/LS Sport	R	2003-04
D1071	7976	Ford/Jaguar/Mercury	Freestyle/Five Hundred/Taurus/X-Type/Montego/Sable	R	2005-08
D1278	8394	Ford/Lincoln	Expedition/Navigator	F	2007-08
D1279	8395	Ford/Lincoln	Expedition/Navigator	R	2007-08



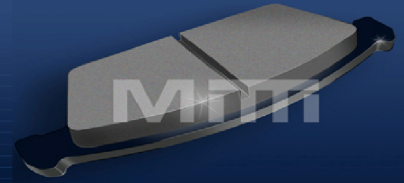
D#	FMSI #	Make	Model	F/R	Year
D702	7576	Ford/Lincoln	Expedition/Navigator (FMSI 7576 .650"Fr)	F	1997-01
D711	Use 879	Ford/Lincoln	Expedition/Navigator/F250	R	1997-02
D765	Use 598	Ford/Lincoln	Taurus SHO/Continental	F	1998-07
D805	7676	Ford/Lincoln	Thunderbird/LS	F	2000-04
D805A	7676	Ford/Lincoln	Thunderbird/LS (Loose Hardware attached)	F	2000-04
D879	7584	Ford/Lincoln	Expedition/Town Car Limo/Mountaineer	R	1999-07
D934	7837	Ford/Lincoln	Expedition/Navigator	F	2003-06
D934A	7837	Ford/Lincoln	Expedn/Navigator (With guide sleeve H/W attached)	F	2003-06
D935	7838	Ford/Lincoln	Expedition/Navigator	R	2003-06
D806	7679	Ford/Lincoln/Jaguar	Thunderbird/LS/S-Type	R	2000-06
D1258	8377/8384	Ford/Lincoln/Mazda	Edge/CX-7/MKX/CX-9	F	2007-08
D1259	8378	Ford/Lincoln/Mazda	Edge/CX-7/MKX/CX-9	R	2007-08
D1164	8277	Ford/Lincoln/Mazda/Mercury	Fusion/MKZ/Zephyr/6/Milan	F	2006-08
D1109	Use 981	Ford/Lincoln/Mercury	Escape/Explorer/Sport Trac/Mariner/Mountaineer	R	2005-08
D545	7239	Ford/Lincoln/Mercury	Thunderbird/Continental/Cougar	R	1989-92
D599	7477	Ford/Lincoln/Mercury	Thunderbird/MkV111/Cougar	R	1993-97
D708	Use 599	Ford/Lincoln/Mercury	Thunderbird/MkV111/Cougar	R	1993-95
D748	7617	Ford/Lincoln/Mercury	Crown Victoria/Town Car/Grand Marquis	F	1998-02
D931	7834	Ford/Lincoln/Mercury	Crown Victoria/Town Car/Grand Marquis	F	2003-08
D932	7835	Ford/Lincoln/Mercury	Crown Vic/Grand Marquis/Town Car	R	2003-03
D1161	8272	Ford/Lincoln/Mercury/Mazda	Fusion/MKZ/Zephyr/Milan/6	R	2006-08
D583	Use 637	Ford/Mazda	Probe/MX6	F	1993
D584	7464	Ford/Mazda	Probe/MX6/626	R	1993-00
D652	7532	Ford/Mazda	Explorer-Ranger-B Pick-Up 2500-4000	F	1995-03
D843	7719	Ford/Mazda	Escape/Tribune	F	2000-07
D637	7515	Ford/Mazda/KIA	Probe/MX6/Protégé/Rio	F	1994-04
D1047	7950	Ford/Mazda/Mercury	Escape/Tribute/Mariner (FMSI 7950 .590: Friction)	F	2005-08
D833	7706	Ford/Mazda/Mercury	Explorer/Ranger/Sportrak/B2300/3000/4000/MPV/Mountaineer	F	2000-08
D1044	7947	Ford/Mazda/Volvo	Focus/Freestar/3/5/C70/S40/V50	F	2004-08
D1021	7926	Ford/Mercury	Freestar/Monterey	R	2004-07
D1022	7927	Ford/Mercury	Freestar/Monterey	F	2004-07
D1040	Use 932	Ford/Mercury	Crown Vic/Grand Marquis/Marauder(Long Wheelbase)	R	2003-08
D1070	7975	Ford/Mercury	Freestyle/Five Hundred/Taurus/Montego/Sable	F	2005-08
D324	Use 421	Ford/Mercury	Taurus/Sable	F	1988-92



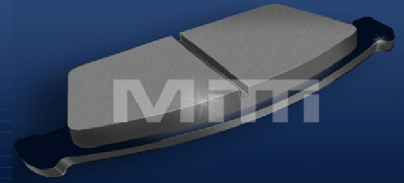
D#	FMSI #	Make	Model	F/R	Year
D421	7308	Ford/Mercury	Taurus/Sable (Small Piston Clip)	F	1988-93
D421A	7308	Ford/Mercury	Taurus/Sable (Large Piston Clip)	F	1988-93
D473	7353	Ford/Mercury	Escort/Tracer	F	1991-02
D601	7479	Ford/Mercury	Taurus/Sable	F	1994-01
D648	7528	Ford/Mercury	Contour-Mystique	F	1995-97
D659	7537	Ford/Mercury	Crown Victoria/Grand Marquis	F	1995-97
D661	7541	Ford/Mercury	Contour/Mystique	R	1995-01
D661A	7541	Ford/Mercury	Ditto (With 2 loose WW Sensors 6041)	R	1995-01
D674	7555	Ford/Mercury	Crown Victoria/Grand Marquis (Small Piston Clip)	R	1997-02
D674A	7555	Ford/Mercury	Crown Victoria/Grand Marquis (Large Piston Clip)	R	1997-02
D678	Use 659	Ford/Mercury	Crown Victoria/Grand Marquis	F	1996-97
D690	Use 674	Ford/Mercury	Crown Victoria/Grand Marquis	R	1998
D745	Use 648	Ford/Mercury	Contour-Mystique	F	1998-00
D748F	7617	Ford/Mercury	Crown Vic/Gd Marquis Police/Taxi (SD Fleet Configuration)	F	1998-02
D762	7630	Ford/Mercury	Contour-Mystique	F	1998-00
D801	Use 648	Ford/Mercury	Contour-Mystique-Cougar (No WW Sensor)	F	1999-02
D801A	7672	Ford/Mercury	Ditto (With 2 Attached WW Sensors 6007)	F	1999-03
D881	7758	Ford/Mercury	Explorer/Mountaineer (S. Piston Clip)	R	2002-05
D881A	7758	Ford/Mercury	Explorer/Mountaineer (L.Piston Clip)	R	2002-05
D466	7613	Ford/Mercury/KIA	Escort/Aspire/Tracer/Rio	F	1991-03
D458	7338	Ford/Mercury/Mazda	Escort/Tracer/Miata	R	1992-96
D663	7514	Ford/Mercury/Mazda	Escort/Tracer/Miata	R	1997-02
D1055	7961	Ford/Mercury/Mazda	Escape/Mariner/Tribute	R	2005-08
D1006	7909	Freightliner/Mercedes	Sprinter Box Van (Teves Caliper) 16" Wheels	R	2002-06
D1006A	7909	Freightliner/Mercedes	Ditto (With 2 Clip on WW Sensors 6022)	R	2002-06
D468	Use 525	GEO/Izuzu	Storm/Impulse/Stylus	F	1990-93
D352	7245	Geo/Scion/Toyota	Prism/XB/Corolla	R	1990-08
D149	Use 543	GM	P Trucks	F	1979-93
D154	7070	GM	Camaro-Blazer-Jimmy	F	1996-03
D202	Use 154	GM	S-10 Jimmy	F	1983-03
D215	7136	GM	All models	F	1985-96
D289	7192	GM	Cavalier, Skylark, Grand Am	F	1985-91
D368	7259	GM	C/G/K 1500	F	1988-91
D376	7265	GM	All Models	F	1988-01



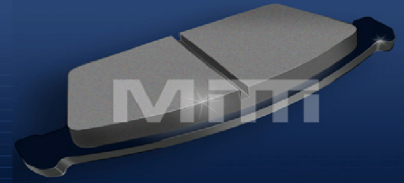
D#	FMSI #	Make	Model	F/R	Year
D377	7266	GM	All Models Rear	R	1988-98
D505	7384	GM	All Models	F	1991-95
D506	7385	GM	All Models	F	1991-95
D52	728	GM	All Models	F	1977-02
D543	7081	GM	P Trucks	F/ R	1991-95
D614	7492	GM	Caprice (FMSI 7492 .618"/.480" Friction)	F	1993-96
D614A	7506	GM	Caprice (FMSI 7506 .685"/.575" Friction)	F	1993-96
D623	7384	GM	All Models	F	1994-00
D673	7554	GM	All Models	F	1996-05
D698	7387	GM	All Models Rear	R	1997-05
D727	7594	GM	Cutlass/Malibu	F	1997-03
D729	7596	GM	Blazer/Jimmy/Olds Bravada/T10	R	1998-05
D750	7619	GM	Camaro/Firebird	R	1998-02
D752	Use 727	GM	Alero/Classic/Grand Am/Malibu	F	1998-05
D818	7693	GM	All Models (Updated Friction Shape)	F	1997-05
D882	7759	GM models/GMC/Izuzu/Saab	Rainier/Trail Blazer/Bravada/Envoy/T10/Ascender/9-7X	F	2002-07
D883	7760	GM models/GMC/Izuzu/Saab	Acadia/Rainier/Trail Blazer/Bravada/Envoy/T10/Ascender/9-7X	R	2002-08
D369	7259	GM/Dodge	Pick-ups/Vans	F	1991-02
D370	7260	GM/Dodge	Pick-ups/Vans	F	1991-00
D370A	7260	GM/Dodge	Pick-ups/Vans	F	1999-02
D459	7339	GM/Dodge	Pick-ups/Vans (Small Piston Clip)	F	1991-00
D459A	7339	GM/Dodge	Pick-ups/Vans (Large Piston Clip)	F	1999-02
D459B	7260	GM/Dodge	Bendix Version (.670" Inner, .620" Outer)(Large Piston Clip)	F	1999-02
D769F	7636	GM/Ford/Thomas	M/H Truck/Sch.Bus 9/12KFr, 19K Rr (SD Fleet Configuration)	F/ R	1996-06
D726	7593	GM/Izuzu	Blazer/Jimmy/Olds Bravada/Hombre	F	1998-05
D184	Use 717	GM/Navistar	M/H Truck/School Bus (Build to order only)	F/ R	1984-98
D184F	Use 717F	GM/Navistar	M/H Truck/School Bus (SD Fleet Configuration)	F/ R	1984-98
D225AF	7142	GM/Navistar	Ditto with Caliper Hardware Kit	F/ R	1984-00
D225F	7142	GM/Navistar	M/H Truck/School Bus (SD Fleet Configuration)	F/ R	1984-00
D380	Use 717	GM/Navistar	M/H Truck/School Bus (Build to order only)	F/ R	1984-99
D380F	Use 717F	GM/Navistar	M/H Truck/School Bus (SD Fleet Configuration)	F/ R	1984-99
D717	7815	GM/Navistar	M/H Truck/School Bus (Build to order only)	F/ R	1998-03



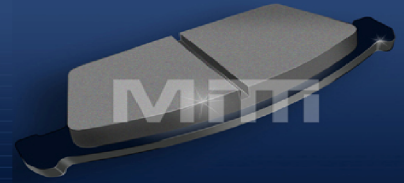
D#	FMSI #	Make	Model	F/R	Year
D717F	7815	GM/Navistar	M/H Truck/School Bus (SD Fleet Configuration)	F/ R	1998-03
D714	Use 508A	GM/Saturn	All Models Rear	R	1997-05
D1010F	7914	GMC	C4/C5 6250 lb axles F/R - C6 Front axle (SD Fleet Configuration)	F/ R	2003-05
D1064F	7969	GMC Truck	C4/C5 with DIH Parking Brake (SD Fleet Configuration)	R	2003-05
D1169A	8410	GMC Truck/Saturn	Acadia/Outlook (FMSI 8410 .630 Friction)	F	2006-08
D792	7700	GMC/Cadillac	Astro/Sierra/Silverado 1500/Escalade/DTS	R	1999-08
D792A	7700	GMC/Cadillac	Ditto (With Heavy Duty Abutment Hardware Kit)	R	1999-08
D785F	7653	GMC/Chevrolet	Sierra/Silverado School Bus (SD Fleet Configuration)	F/ R	1999-08
D909	7788	GMC/Chevrolet	Sierra/Silverado HD 3500	R	2001-08
D785	7653	GMC/Chevrolet/Cadillac	Astro/Sierra/Yukon/Silverado 7200GVW/Escalade/Avalanche /H2	F/ R	1999-08
D784F	7652/8454	GMC/Chevrolet/Hummer	Sierra/Yukon/Silverado School Bus (SD Fleet Configuration)	F	1999-08
D845	7260	GMC/Dodge	Vans2500/Ram 2500	F	1999-01
D825F	7697	GMC/Isuzu	W4 Series/ NPR/NQR Series (SD Fleet Configuration)	F	1999-02
D826F	7698	GMC/Isuzu	W4 Series/ NPR/NQR Series (SD Fleet Configuration)	F	1999-03
D827F	7699	GMC/Isuzu	W4 Series/ NPR/NQR Series (SD Fleet Configuration)	F	1999-03
D1062A F	7968	Hino	Ditto (With WW Sensors. Configuration TBA)	F	2005-06
D1062F	7968	Hino	185 (SD Fleet Configuration)	F	2005-06
D1086	7418	Honda	CR-V	R	2005-08
D1088	7993	Honda	Odyssey	R	2005-08
D1102	8208	Honda	Ridgeline	F	2006-08
D1103	8209	Honda	Ridgeline	R	2006-08
D1276	Use 959	Honda	Civic GX	F	2006-08
D1336	8447	Honda	Accord	R	2008
D176	7103	Honda	Prelude	F	1977-81
D212	Use 176	Honda	Prelude	F	1982
D256	7162	Honda	Civic CRX/Insight/Prelude	F	1984-06
D273	7178	Honda	Civic/ CRX	F	1989-91
D339	Use 364	Honda	Accord	R	1998
D465	7573	Honda	Civic (FMSI 7573 .625" Friction)	F	1996-05
D474	Use 273	Honda	Civic Wagon/CRX	F	1991
D560	Use 273	Honda	Civic	F	1992-00
D568	7448	Honda	Prelude	F	1992-97
D764	Use 465	Honda	Accord/Civic	F	1993-08



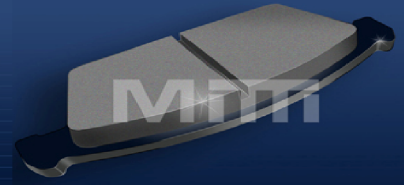
D#	FMSI #	Make	Model	F/R	Year
D832	7705	Honda	Insight	F	2000-06
D914	7795	Honda	CRV/Element	F	2003-08
D943	Use 914	Honda	CR-V/Element	F	2003-08
D948	7497	Honda	Civic Hybrid	F	2003-08
D958	Use 914	Honda	Accord 4 Cylinder/Hybrid (Changed to D914 Consolidation)	F	2003-08
D959	7857	Honda	Accord 6 Cylinder	F	2003-07
D503	7382	Honda/Acura	Prelude/CR-V/Legend/NSX	F	1993-05
D793	7663	Honda/Acura	Odyssey/MDX	F	1999-03
D363	7347	Honda/Isuzu	Passport/Amigo	F	1990-94
D579	7459	Honda/Isuzu	Passport/Rodeo/Trooper/Amigo/Axiom	F	1992-04
D867	7742	Honda/Mitsubishi/Isuzu	Passport/Rodeo/Montero/Endeavor/Axiom	F	2001-08
D1104	8210	Hyundai	Tiburon/Tucson	F	2004-08
D1262	7236	Hyundai	Sonata	R	1994-98
D1284	8401	Hyundai	Entourage	R	2007-08
D1297	8414	Hyundai	Santa Fe	R	2007
D1301	8417	Hyundai	Veracruz	F	2007-08
D1302	8418	Hyundai	Veracruz	R	2007-08
D440	7293	Hyundai	Accent/Excel/Scoupe	F	1993-05
D449	Use 700	Hyundai	Elantra/Sonata	F	1991-96
D497	Use 440	Hyundai	Accent/Excel/Scoupe	F	1993-05
D566	7446	Hyundai	Scoupe	F	1992-95
D700	7329	Hyundai	Elantra/Sonata/Tiburon	F	1997-01
D863	Use 813	Hyundai	Santa Fe	R	2001-06
D864	7739	Hyundai	Santa Fe/XG 300/350	F	2001-06
D941	7843	Hyundai	Elantra	F	2002-05
D1013	7917	Hyundai/KIA	XG 350/Amanti	F	2004-06
D1125	8233/8306	Hyundai/KIA	Sonata 6 Cylinder/Azera/Amanti	F	2006-08
D1156	8266	Hyundai/KIA	Accent GL/Rio LX	F	2006-08
D1157	8267	Hyundai/KIA	Accent GL/Rio LX	R	2006-08
D1202	8322	Hyundai/KIA	Entourage/Santa Fe/Sedona	F	2006-08
D747	Use 700	Hyundai/Kia	Sonata/Optima	F	1998-04
D813	7688	Hyundai/KIA	Azera/Elantra/Santa Fe/Sonata/Tucson/XG 350/Amanti/Sportage	R	1998-08
D887	Use 700	Hyundai/Kia	Tiburon/Optima/Elantra	F	2001-06
D903	Use 864	Hyundai/KIA	Santa Fe/Sedona	F	2002-06



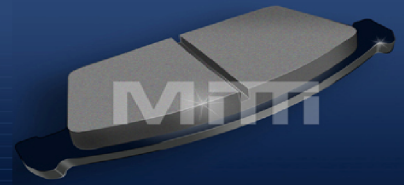
D#	FMSI #	Make	Model	F/R	Year
D924	7825/8232/8386	Hyundai/KIA	Elantra/Sonata/Tiburon/Tucson/Magentis/Optima/Sportage	F	2002-08
D954	7853	Hyundai/KIA	Entourage/Sedona/Sorento	R	2003-07
D323	7283	Hyundai/KIA/Nissan	Tiburon/Spectra/Maxima	R	1987-07
D464	Use 323	Hyundai/KIA/Nissan	Tiburon/Elantra/Tiburon/Spectra/Stanza	R	1992-08
D1041	7945	Infiniti/Nissan	QX 56/Armada/Titan	R	2004-08
D1063	Use 1015	Infiniti	QX56	F	2004-06
D1287	8404	Infiniti	G35 Sedan Sport	F	2007-08
D1346	8457	Infiniti	G37 Sport	F	2008
D1347	8458	Infiniti	G37 Sport	R	2008
D481	7363	Infiniti	Q45	R	1990-94
D1015	7918	Infiniti/Nissan	QX56/Armada/Titan	F	2004-06
D1183	8300	Infiniti/Nissan	QX56/Armada/Titan	F	2006-07
D1286	8403	Infiniti/Nissan	QX56/Armada/Titan	F	2007-08
D1288	Use 905	Infiniti/Nissan	G35/Altima/Sentra/Sentra SE-R Spec V/2.5L M/T	R	2007-08
D441	Use 266	Infiniti/Nissan	M30/Pick-Up Trucks	F	1991-97
D540	7421	Infiniti/Nissan	G20/I30/Altima/Maxima	R	1995-01
D595	Use 540	Infiniti/Nissan	G20/Altima/Maxima/Sentra	R	1993-97
D815	7318	Infiniti/Nissan	G35/Altima/Maxima/Sentra (FMSI 7318 .670" Friction)	F	2000-08
D888	7766/8221	Infiniti/Nissan	FX35/45/G35/M35/M45/Q45/350Z/Pathfinder	F	2002-08
D900	7777	Infiniti/Nissan	G20/Sentra	R	2001-06
D905	7784	Infiniti/Nissan	G35/FX35/M35/M45/45/Altima/Maxima/Murano/Quest/350Z	R	2002-08
D960	7858	Infiniti/Nissan	G35/350Z (FMSI 7858 .564" Friction)	F	2003-08
D969	7870	Infiniti/Nissan	FX35/FX45/Altima/Maxima/Murano	F	2003-08
D486	7366	Infinity	Q45	F	1990-96
D486A	7366	Infinity	Q45 (With 1 Clip on WW Sensor Kit)	F	1990-96
D587	7467	Infinity	J30	F	1993-97
D588	7468	Infinity	J30/M45/Q45	R	1993-06
D961	7859	Infinity/Mitsu/Nissan/Subaru	G35/Lancer Evo VIII/350Z Track/FX 35/45/Impreza WRX STI	R	2003-08
D462	7342/8314	Infinity/Nissan	G20/Axxess/Sentra/Stanza/240 SX	F	1990-06
D815A	7783	Infinity/Nissan	I35/Altima/Maxima/Versa (FMSI 7783 .605" Friction)	F	2002-08
D786AF	7654	International	M/H Truck/Bus 66mm Brake (SD Fleet Configuration.799" Fr)	F/ R	1999-06
D786F	7655	International	M/H Truck/Bus 73mm Brake (SD Fleet Configuration1.055" Fr)	F/ R	1999-06
D442	7816	Iveco	Model 23-16	F	1990
D1027A	7931	Iveco/Workhorse	Ditto (With 2 Clip on WW Sensors TBA)	F	1987



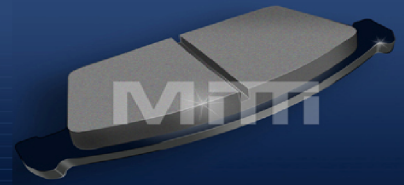
D#	FMSI #	Make	Model	F/R	Year
F					
D1027F	7931	Iveco/Workhorse	Z435/Z450 Turbo Diesel/ (SD Fleet Configuration)	F	1987
D398	7328	Izuzu	Amigo/Pick-Up	R	1990-95
D448	Use 398	Izuzu	Pick-Up Trucks/Trooper	R	1990-91
D1095	7874/7957	Jag/Pontiac/Saab/Saturn/Volvo	S Type/XJ/Solstice/9-3/9-3 Aero/C70/Sky/C70/S40	R	2004-08
D1065	7971	Jaguar	S Type/XJ8	F	2003-06
D1065A	7971	Jaguar	Ditto (With 2 Clip on WW Sensors TBA)	F	2003-06
D135	7067	Jaguar	XJS	F	1976-96
D394	7395	Jaguar	XJ6/XJ8/XJ12/XJR/XK8 (.640" Friction)	F	1995-06
D394A	7395	Jaguar	Ditto (With 2 Clip on WW Sensors 6030)	F	1995-06
D408	7297	Jaguar	XJS	R	1988-96
D408A	7297	Jaguar	Ditto (With 2 Attached WW Sensors TBA)	R	1988-96
D408B	7297	Jaguar	Ditto (With 2 Attached WW Sensors TBA)	R	1988-96
D517	7396	Jaguar	XJ6/XJ12/XJS	R	1990-94
D517A	7396	Jaguar	Ditto (With 2 Clip on WW Sensors 6040)	R	1990-94
D586	Use 408	Jaguar	XJS	R	1988-96
D640	7519	Jaguar	XJ12/XJRS	F	1993-96
D640A	7519	Jaguar	Ditto (With 2 Clip on WW Sensors 6030)	F	1993-96
D688	7563	Jaguar	XJ8 (Square Lug Small Piston Clip 3118)	R	1998-06
D688A	7563	Jaguar	XJ6/XJ12/XJR/XJS/XK8/XKR ("D" Lug Large Piston Clip 3088)	R	1994-06
D9	721	Jaguar	XJS	R	1976-94
D901	Use 394	Jaguar	S Type Vandenplas/XJ 8	F	1998-03
D910	7789	Jaguar	X - Type	F	2002-08
D911	7790	Jaguar	X - Type	R	2002-04
D933	7836	Jaguar	S-Type	F	2003-05
D933A	7836	Jaguar	S-Type (Loose Hardware Attached)	F	2003-05
D938	7840	Jaguar	S Type R	F	2003-06
D592	7831	Jaguar/Volvo	S Type R/XJR/XK/XKR - S40/60/V70 (FMSI 7831 .550" Fr)	R	2002-07
D1080	7985	Jeep	Grand Cherokee	F	2005-06
D1087	7945	Jeep	Commander/Grand Cherokee	R	2005-08
D1181	Use 1080	Jeep	Commander	F	2006-08
D1270	Use 1053	Jeep	Grand Cherokee SRT-8	R	2007
D477	7507	Jeep	Cherokee/Grand Cherokee/Wrangler	F	1990-04
D625	7502	Jeep	Grand-Cherokee	R	1994



D#	FMSI #	Make	Model	F/R	Year
D666	7502	Jeep	Grand-Cherokee	R	1995-96
D712	Use 477	Jeep	Cherokee/Grand Cherokee/Wrangler	F	1997-06
D713	Use 666	Jeep	Grand-Cherokee	R	1997-99
D790	7660	Jeep	Grand-Cherokee	F	1999-02
D791	7661	Jeep	Grand-Cherokee	R	1999-04
D942	7660	Jeep	Grand-Cherokee	F	2002
D945	7846	Jeep	Grand Cherokee with special caliper & rotor	F	2002-04
D964	7863	Jeep	Liberty	R	2003-06
D981	7863	Jeep	Liberty/Wrangler (D964 with anti-rattle clips attached)	R	2003-07
D1074	7979	KIA	Spectra/Spectra5	F	2005-08
D1097	Use 864	KIA	Sedona	F	2005
D1295	8412	Kia	Rondo	F	2007
D1296	8413	Kia	Rondo	R	2007
D1313	8428	Kia	Amanti	R	2007-08
D649	Use 766	KIA	Sephia	F	1994-96
D670	7550	Kia	Sportage	F	1995-97
D719	Use 670	Kia	Sportage	F	1995-97
D766	7529	KIA	Sephia/Spectra	F	1998-00
D774	7641	Kia	Sportage/Rio	F	1998-01
D775	7642	Kia	Sedona/Sephia/Spectra	R	1998-05
D889	7767	Kia	Rio/Spectra	F	2001-05
D925	7826	KIA	Sephia/Spectra	F	1994-00
D955	Use 864	KIA	Sorento	F	2003-07
D693	7568	KIA/Volkswagen	Sephia/Pointer	R	1996-04
D1203A F	8323	Knorr Bremse	Ditto (With 2282.4 Caliper Hardware Kit)	F/ R	2003-07
D1203F	8323	Knorr Bremse	12K-20K Air Disc Brake Axle Applications	F/ R	2003-07
D1098	8202	Land Rover	LR3/Sport/Range Rover	F	2005-08
D1098A	8202	Land Rover	Ditto (With 2 Clip on WW Sensors 6055)	F	2005-08
D1099	8203	Land Rover	LR3/Range Rover	R	2005-08
D1099A	8203	Land Rover	Ditto (With 2 Clip on WW Sensors 6056)	R	2005-08
D1263	8380	Land Rover	Range Rover Sport	F	2006-08
D1263A	8380	Land Rover	Range Rover Sport (With WW Sensors TBA)	F	2006-08
D518	7399	Land Rover	Defender/Discovery/Land Rover/Range Rover	R	1991-98
D518A	7399	Land Rover	Ditto (With 1 Attached WW Sensor 6020)	R	1991-98



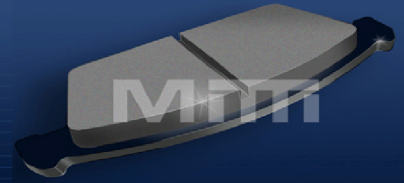
D#	FMSI #	Make	Model	F/R	Year
D520	7401	Land Rover	Discovery/Land Rover/Range Rover	F	1994-98
D520A	7401	Land Rover	Ditto (With 1 Attached WW Sensor 6020)	F	1994-98
D676	7556	Land Rover	Discovery/Land Rover/Range Rover	F	1995-04
D926	7827	Land Rover	Freelander	F	2003-05
D992	Use 681	Land Rover	Range Rover	F	2003
D1314	8429	Land Rover/Volvo	LR2/S80 3.2 FWD	R	2007-08
D1113	8217	Lexus	GS350/430/GS450H/IS250/350	R	2006-08
D1118	8224	Lexus	GS430/450H/IS350	F	2006-08
D1178	8294	Lexus	IS250	F	2006-08
D1282	8398	Lexus	LS460/LS600H	F	2007-08
D1282A	8398	Lexus	LS460/LS600H (With WW Sensor TBA)	F	2007-08
D1283	8399	Lexus	LS460/LS600H	R	2007-08
D1283A	8399	Lexus	LS460/LS600H (With WW Sensor TBA)	R	2007-08
D571	7451	Lexus	SC 300/SC 400	F	1991-00
D612	7490	Lexus	LS 400	F	1993-04
D612A	7490	Lexus	LS 400 (With 2 Clip on WW Sensors TBA)	F	1993-04
D665	7544	Lexus	LS 400	F	1995-00
D665A	7544	Lexus	LS 400 (With 2 Clip on WW Sensors TBA)	F	1995-00
D718	Use 476	Lexus	SC300	F	1996-98
D771	7638	Lexus	GS 300/400/430-IS 300-SC 430	R	1998-08
D870	7745	Lexus	LS 430	F	2001-06
D870A	7745	Lexus	LS 430 (With 1 Clip on WW Sensor TBA)	F	2001-06
D871	7746	Lexus	LS 430	R	2001-06
D871A	7746	Lexus	LS 430 (With 1 Clip on WW Sensor TBA)	R	2001-06
D930	7833	Lexus	RX 300	F	2002-03
D835	7708	Lexus/Scion/Toyota	ES 300/Tc/Camry	R	2000-08
D1005	7906	Lexus/Toyota	Highlander Hybrid/RX 330/RX 350/400H	F	2004-08
D1212	8332	Lexus/Toyota	ES350/Camry/RAV-4	R	2006-08
D1293	8331	Lexus/Toyota	ES350/Avalon/Camry Hybrid	F	2007-08
D1303	8419	Lexus/Toyota	LX570/Land Cruiser/Sequoia/Tundra	F	2007-08
D1304	8420	Lexus/Toyota	LX570/Land Cruiser/Sequoia/Tundra	R	2007-08
D325	7223	Lexus/Toyota	ES300/RX300/Camry/Celica	R	1990-03
D356	7247	Lexus/Toyota	ES 250/Camry/Celica/Celica GT/GTS	F	1990-93
D572	7452	Lexus/Toyota	GS300/SC300/400/Supra	R	1991-00



D#	FMSI #	Make	Model	F/R	Year
D606	7487	Lexus/Toyota	LX450/GX470/Land Cruiser/4 Runner/Sequoia	R	1993-08
D613	7491	Lexus/Toyota	LS400/Supra	R	1993-00
D613A	7491	Lexus/Toyota	LS400/Supra (With 2 Clip on WW Sensors TBA)	R	1993-00
D619	7495	Lexus/Toyota	IS300/GS300-400-430/SC430/Supra	F	1993-08
D773	7640	Lexus/Toyota	LX470/Land Cruiser	R	1998-07
D906	7785	Lexus/Toyota	ES 300/330/Camry/Solara (FMSI 7785 .630" Friction)	F	2002-07
D908	7787	Lexus/Toyota	GS430/Camry	F	2002-06
D996	7897	Lexus/Toyota	RX330/RX350/RX400H/Highlander/hybrid	R	2004-08
D200	7082	Lincoln	Continental - Mark	F	1982-92
D347	Use 545	Lincoln	Mark VII	R	1991-92
D597	Use 421	Lincoln	Continental	F	1990-92
D952	7851	Lincoln	Aviator	R	2003-05
D953	7852	Lincoln	Aviator	F	2003-05
D598	7476	Lincoln/Ford/Mercury	Continental - Mark/Taurus/Sable	F	1993-01
D1162	Use 572	Lotus	Espirit	F	1989-92
D1002	Use 891	Mazda	Miata	R	2003-05
D1008	7912	Mazda	RX8 (FMSI 7912 .565" Friction)	R	2004-08
D1008A	8313	Mazda	RX8 (FMSI 8313 .525" Friction)	R	2006-07
D1009	7913	Mazda	RX8	F	2004-08
D1038	Use 551	Mazda	MPV	F	2003-06
D1073	7978	Mazda	MPV	R	2005-06
D1179	8295	Mazda	Miata/MX-5	F	2006-08
D1180	8296	Mazda	Miata/MX-5	R	2006-08
D1186	8304	Mazda	6-Mazdaspeed	F	2006-07
D1192	8277	Mazda		6 F	2006-07
D1230	Use 1044	Mazda		39512 F	2006-08
D283	Use 332	Mazda	RX-7	R	1984-85
D320	Use 574	Mazda	Pick-up Trucks B2200/2600	F	1986-93
D331	7227	Mazda	RX-7	F	1986-89
D332	7186	Mazda	RX-7	R	1986-89
D389	7276	Mazda		929 F	1989-91
D390	7277	Mazda		929 R	1988-91
D457	Use 525	Mazda	Miata	F	1990
D463	Use 331	Mazda	RX-7	F	1991-92

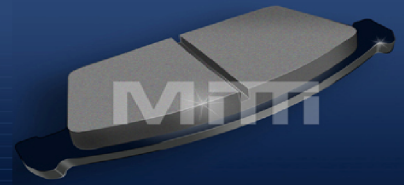


Pastillas para Frenos

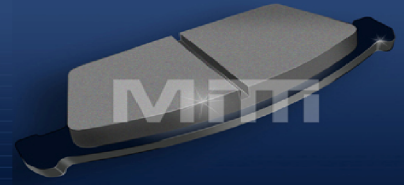


D#	FMSI #	Make	Model	F/R	Year
D482	Use 332	Mazda	RX-7/Model 6	R	1991-05
D525	7337	Mazda	Miata	F	1991-93
D550	7429	Mazda	MPV	F	1992-95
D551	7430	Mazda	MPV	F	1992-06
D552	7431	Mazda	929	F	1992-95
D553	7521	Mazda	Millenia (FMSI 7521 .590"/.550" Friction)	R	1995-02
D553A	7432	Mazda	929/MPV (FMSI 7432 .630"/.590" Friction)	R	1992-98
D574	7454	Mazda	Pick-up Trucks B2200/2600	F	1990-93
D585	Use 331	Mazda	RX-7	F	1993-96
D635	7513	Mazda	Miata	F	1994-05
D636	7514	Mazda	Miata	R	1994-05
D643	7520	Mazda	Millenia	F	1995-02
D643A	7520	Mazda	Millenia (4 Clip on Wear Sensors attached)	F	1995-02
D755	7624	Mazda	626/Protégé Mazdaspeed	F	1998-03
D798	7670	Mazda	Protégé	F	1999-01
D890	7768	Mazda	Miata	F	2001-05
D891	7769	Mazda	Miata	R	2001-04
D892	7771	Mazda	Protégé	R	2001-03
D893	7772	Mazda	Protégé	F	2003
D957	7856	Mazda	6	F	2003-05
D973	7874/8248	Mazda/Saab/Volvo	Mazda 3/5/ Saab 9-3/S40/V50	R	2003-08
D760	7628	Mercedes Benz	ML320	F	1998-04
D760A	7628	Mercedes Benz	Ditto (With 2 Clip on WW Sensors 6017)	F	1998-04
D761	7629	Mercedes Benz	ML320	R	1998only
D853B	8205	Mercedes Benz	E320 4 Matic (FMSI 8205 .720" Friction)	F	2005
D853C	8205	Mercedes Benz	Ditto (With 2 Clip on WW Sensors (1x6014 +1x6046)	F	2005
D875	7750	Mercedes Benz	ML320/ML430	R	1999-03
D875A	7750	Mercedes Benz	Ditto (With 1 Clip on WW Sensor on Inner Left Pad 6012)	R	1999-03
D31	7736	Mercedes/Volvo	350/420/560/-/780/850/DL/GL/240/S70/V70	R	1988-03
D1072	Use 145	Mercedes-Benz	(FMSI 7977 .635" Friction)	F	2004
D1072A	Use 145A	Mercedes-Benz	Ditto (With 1 Clip on WW Sensor 6016)	F	2004
D1116	8222	Mercedes-Benz	CLK/SLK 55 AMG	F	2005-08
D1116A	8222	Mercedes-Benz	CLK/SLK 55 AMG (With 2 Clip on WW Sensors TBA)	F	2005-08
D1121	8227	Mercedes-Benz	C230/C320/CLK350 Sport Sedan	F	2005-08

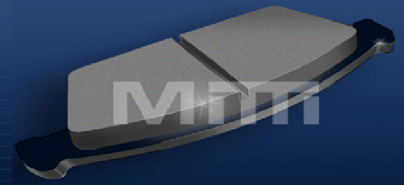




D#	FMSI #	Make	Model	F/R	Year
D1121A	8227	Mercedes-Benz	C230/C320 Sport Sedan (With 2 Clip on WW Sensors 6014)	F	2005-08
D1122	8228	Mercedes-Benz	GL320/450/R350/500/ML 350/500	R	2006-08
D1122A	8228	Mercedes-Benz	Ditto (With 1 Clip on WW Sensor 6054)	R	2006-08
D1123	8229	Mercedes-Benz	R350/500 /E350/500/550/GL320/ML 350/500	F	2006-08
D1123A	8229	Mercedes-Benz	Ditto (With 1 Clip on WW Sensor 6054)	F	2006-08
D1223	8343	Mercedes-Benz	CL550/600/S550/S600	F	2007-08
D1223A	8343	Mercedes-Benz	Ditto (With 1 Clip on WW Sensor 6054)	F	2007-08
D1231	Use 983	Mercedes-Benz	CL55/CLS AMG/S600/SL600/SLR (8 Pads per set)	F	2004-08
D1231A	Use 983A	Mercedes-Benz	Ditto (With 2 Clip on WW Sensors 6014)	F	2004-08
D1340	8451	Mercedes-Benz	C300	F	2008
D1340A	8451	Mercedes-Benz	C300 (With 2 Clip on WW Sensors NU6042)	F	2008
D1341	8452	Mercedes-Benz	C300	R	2008
D1341A	8452	Mercedes-Benz	C300 (With 2 Clip on WW Sensors NU6042)	R	2008
D145	7977	Mercedes-Benz	350/400/420/560 Series (FMSI 7977 .636" Friction)	F	1986-91
D145A	7977	Mercedes-Benz	Ditto (With 1 Clip on WW Sensor 6016)	F	1986-91
D335	7315	Mercedes-Benz	220/250/280/300 Series	R	1990-96
D423	7311	Mercedes-Benz	300 E/T Series	F	1990-95
D426	Use 335	Mercedes-Benz	190 Series	R	1989-93
D487	Use 493	Mercedes-Benz	190D	F	1990-93
D495	7374	Mercedes-Benz	C36/300/320/400 Series	R	1990-97
D495A	7374	Mercedes-Benz	Ditto (With 1 Clip on WW Sensor 6016)	R	1990-97
D561	7538	Mercedes-Benz	300/320/400/420/500/600 Series(FMSI 7538 .550" Fr.)	F	1990-98
D561A	7538	Mercedes-Benz	Ditto (With 2 Clip on WW Sensors 6016)	F	1990-98
D561B	7440	Mercedes-Benz	300/320/400/420/500/600 Series(FMSI 7440 .660" Fr.)	F	1990-98
D561C	7440	Mercedes-Benz	Ditto (With 2 Clip on WW Sensors 6016)	F	1990-98
D577	7457	Mercedes-Benz	300/320/350/400/420/500/600 Series	F	1991-99
D577A	7457	Mercedes-Benz	Ditto (With 1 Clip on WW Sensor 6016)	F	1991-99
D578	7458	Mercedes-Benz	S320	F	1996
D578A	7458	Mercedes-Benz	Ditto (With 1 Clip on WW Sensor 6016)	F	1996
D603	7526	Mercedes-Benz	300/320/350/400/420/500/550/600 Series	R	1991-08
D603A	7526	Mercedes-Benz	Ditto (With 1 Clip on WW Sensor 6016)	R	1991-08
D620	7496	Mercedes-Benz	C36/220/250/280/300 Series	R	1990-97
D620A	7496	Mercedes-Benz	Ditto (With 1 Clip on WW Sensor 6016)	R	1990-97
D645	7523	Mercedes-Benz	C220/230/250/280 Series	F	1994-97



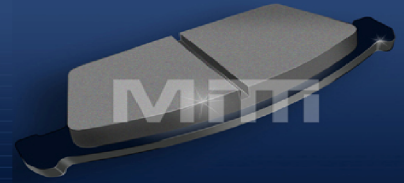
D#	FMSI #	Make	Model	F/R	Year
D645A	7523	Mercedes-Benz	Ditto (With 2 Clip on WW Sensors 6016)	F	1994-97
D689	Use 577	Mercedes-Benz	350/420/500/600 Series	F	1994-99
D689A	Use 577A	Mercedes-Benz	Ditto (With 2 Clip on WW Sensors 6016)	F	1994-99
D710	7583	Mercedes-Benz	C36/SLK230/280/300/320	F	1996-04
D710A	7583	Mercedes-Benz	Ditto (With 2 Clip on WW Sensors 6016)	F	1996-04
D739	7608	Mercedes-Benz	220/230 Series	R	1996-98
D740	Use 853	Mercedes-Benz	CLK320-430/SLK320/E320-420	F	1997-03
D847	7723	Mercedes-Benz	C/CL/CLK/ML/AMG/ML/S/SL/350/430/500/550/600 Series	F	1999-08
D847A	7723	Mercedes-Benz	Ditto (With 2 Clip on WW Sensors (1x6014 + 1x6046))	F	1999-08
D848	7724	Mercedes-Benz	S/CL55 AMG/S430/S/CL500/S/CL600	R	2000-06
D848A	7724	Mercedes-Benz	Ditto (With 1 Clip on WW Sensor 6014)	R	2000-06
D872	7747	Mercedes-Benz	C230/240Series/280Series/C/CLK 320/CLK350	F	2002-08
D872A	7747	Mercedes-Benz	Ditto (With 2 Clip on WW Sensors 6014)	F	2002-08
D873	Use 876	Mercedes-Benz	CLK320/350/430/C230/C320/240 Series/C280/C32 AMG	R	2001-08
D874	7749	Mercedes-Benz	ML55/ML55 AMG/ML350/430/500	R	1999-04
D874A	7749	Mercedes-Benz	Ditto (With 1 Clip on WW Sensor 6014)	R	1999-04
D876	7753	Mercedes-Benz	E320/420/430/CLK320/430	R	1998-07
D876A	7753	Mercedes-Benz	Ditto (With 1 Clip on WW Sensor 6016)	R	1998-07
D927	7828	Mercedes-Benz	G500/G55 AMG	F	2002-08
D927A	7828	Mercedes-Benz	Ditto (With 2 Clip on WW Sensors 6057)	F	2002-08
D983	7885	Mercedes-Benz	CLS55 AMG/CL65/SL55/SL65/S55 AMG (8 Pads per set)	F	2003-07
D983A	7885	Mercedes-Benz	Ditto (With 2 Clip on WW Sensors 6014)	F	2003-07
D984	7886	Mercedes-Benz	S55/SL55 AMG/SL600 (FMSI 7886 .590" Friction)	R	2003-08
D984A	7886	Mercedes-Benz	Ditto (With 1 Clip on WW Sensor 6014)	R	2003-08
D984B	8219	Mercedes-Benz	SL65/SLK55/CLK55/63 AMG/SLR McLaren (FMSI 8219 .550" Friction)	R	2005-08
D984C	8219	Mercedes-Benz	Ditto (With 1 Clip on WW Sensor 6014)	R	2005-08
D985	7887	Mercedes-Benz	S430/500	F	2003-06
D985A	7887	Mercedes-Benz	Ditto (With 2 Clip on WW Sensors 6014)	F	2003-05
D986	7888	Mercedes-Benz	CL550/600/E320/350/500/SL500/550/S500/600 4Matic	R	2003-08
D986A	7888	Mercedes-Benz	Ditto (With 1 Clip on WW Sensor 6014)	R	2003-08
D987	7889	Mercedes-Benz	E320	F	2003-07
D987A	7889	Mercedes-Benz	Ditto (With 2 Clip on WW Sensors 1x6014 + 1x6046)	F	2003-07
D427	7316	Mercedes-Benz/Saab	300TD/300TE/900 Series	R	1987-96
D382	7271	Mercury	Merkur	R	1988-89



D#	FMSI #	Make	Model	F/R	Year
D382A	7271	Mercury	Ditto (With 2 Attached WW Sensors 6001)	R	1988-89
D899	7780	Mercury	Cougar	R	2000-03
D899A	7780	Mercury	Cougar (With 2 Attached WW Sensors 6007)	R	2000-03
D576	7456	Mercury/Nissan	Villager/Quest	F	1993-03
D1308	8423	Mini	Cooper/Clubman	F	2007-08
D1308A	8423	Mini	Cooper (With Clip on WW Sensors TBA)	F	2007-08
D1309	8424	Mini	Cooper/Clubman	R	2007-08
D1309A	8424	Mini	Cooper (With Clip on WW Sensors TBA)	R	2007-08
D329	7225	Mitsubishi	Eclipse	R	1991
D530	7412	Mitsubishi	Diamante/Montero	F	1992-06
D723	Use 530	Mitsubishi	Diamante/Outlander	F	1997-06
D733	7602	Mitsubishi	Montero Sport	R	1997-04
D904	7782	Mitsubishi	Lancer	F	2002-08
D1265F	8382	Mitsubishi Fuso	FE 120 (Dual Caliper-8 pads /set) (SD Fleet Configuration)	F/ R	2005-07
D734	7603	Mitsubishi Fuso	FE 649 (Dual Caliper - 8 Pads per set)	F/ R	1996-04
D735	7604	Mitsubishi Fuso	FE 639 (Dual Caliper - 8 Pads per set)	F	1996-04
D1094	8200	Nissan	Frontier/Pathfinder/Xterra	F	2005-08
D1100	8206	Nissan	Frontier/Xterra	R	2005-08
D1101	8204	Nissan	Pathfinder/Xterra	R	2005-08
D1338	8449	Nissan	Rogue/Sentra SE-R Spec V/2.5L M/T	F	2008
D1345	8456	Nissan	Versa 4 Door	F	2008
D230	Use 272	Nissan	280Z/280ZX	R	1982-83
D231	Use 272	Nissan	Maxima	R	1981
D232	Use 272	Nissan	Maxima	R	1982-83
D265	Use 266	Nissan	Pick-Up Trucks	F	1983-85
D266	7282	Nissan	Pick-Up Trucks	F	1991-93
D272	7146	Nissan	Maxima/200/240/300SX	R	1984-91
D333	7228	Nissan	Pathfinder/Frontier/Xterra 2WD	F	1987-04
D357	7248	Nissan	Pulsar	F	1988-89
D401	7290	Nissan	Pathfinder	R	1989-95
D429	Use 323	Nissan	Maxima	R	1990
D430	7318	Nissan	Altima/Maxima/Sentra (.670" Friction)	F	1989-06
D460	Use 647	Nissan	300ZX	F	1990-93

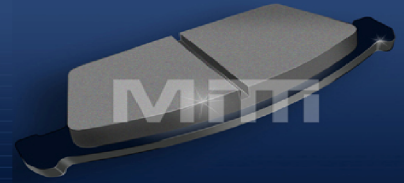


Pastillas para Frenos

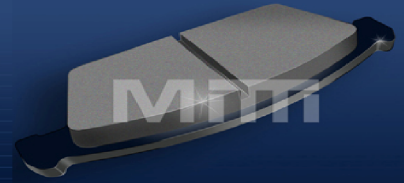


D#	FMSI #	Make	Model	F/R	Year
D485	7342	Nissan	Sentra/Stanza/240 SX	F	1989-02
D510	7389	Nissan	Sentra/NX	F	1991-94
D526	Use 430	Nissan	Altima/Maxima	F	1993-97
D647	7340	Nissan	300ZX	F	1994-96
D668	7546	Nissan	Sentra/200SX	F	1995-99
D669	7547	Nissan	Sentra/200SX	R	1995-99
D830	7703	Nissan	Xterra/Quest (FMSI 7703 .665" Friction)	F	1999-04
D830A	7876	Nissan	Frontier 4x4 (FMSI 7876 .630" Friction)	F	2003-04
D855A	7910	Nissan	Quest (FMSI 7910 .605" Friction)	F	2004-06
D960A	7954	Nissan	Sentra-Brembo Brakes (FMSI 7954 .663" Friction)	F	2004-06
D461	7341/8299	Nissan/Subaru	300ZX/Impreza WRX	R	1990-07
D653	7318	Nissan/Suzuki	Maxima/SX4	F	1995-08
D1000	7901	Pontiac	Grand Prix	F	2004
D1043	7946	Pontiac	GTO	F	2004
D1048	7951	Pontiac	GTO (FMSI 7951 .650" Friction) Solid Rotor	R	2004-06
D1048A	8223	Pontiac	GTO (FMSI 8223 .615" Friction) Vented Rotor	R	2005-06
D1110	Use 921	Pontiac	Grand Prix with 367p Conversion Kit	F	2005-08
D823	7696	Pontiac/Toyota	Vibe/Celica/Corolla/Matrix	R	2000-08
D923	7824	Pontiac/Toyota	Vibe/Corolla/Matrix	F	2003-08
D1130	8241	Porsche	Cayenne 19" Wheels	F	2005-06
D1130A	8241	Porsche	Ditto (With 2 Clip on WW Sensors 6049)	F	2005-06
D1134	8245	Porsche	Boxter	R	2005-08
D1134A	8245	Porsche	Boxter (With 2 Clip on WW Sensors TBA)	R	2005-08
D345	Use 608	Porsche	911/928/944/968	F/ R	1991-94
D372	Use 609	Porsche	928	F	1986-87
D447	Use 609	Porsche	911/928/968	F/ R	1991-97
D608	7326	Porsche	911 Carrera 2/4WD	F/ R	1992-94
D608A	7326	Porsche	Ditto (With 2 Clip on WW Sensors TBA)	F/ R	1992-94
D609	7327	Porsche	911	F	1995-96
D737	7606	Porsche	Boxter	F	1998-08
D737A	7606	Porsche	Ditto (With 2 Clip on WW Sensors TBA)	F	1998-08
D738	7607	Porsche	Boxters/Cayman/911/Carrera/4/4S/S/Targa	F/ R	1998-08
D738A	7607	Porsche	Ditto (With 2 Clip on WW Sensors TBA)	F/ R	1998-08

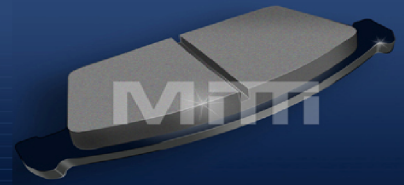




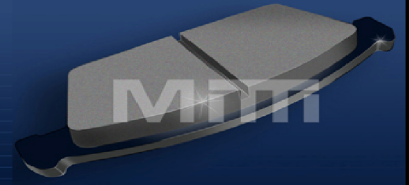
D#	FMSI #	Make	Model	F/R	Year
D776	7643	Porsche	911/Carrera Targa/Carrera 4	F	1998-02
D776A	7643	Porsche	Ditto (With 2 Clip on WW Sensors TBA)	F	1998-02
D916	7797	Porsche	911	F	2002-07
D916A	7797	Porsche	Ditto (With 2 Clip on WW Sensors TBA)	F	2002-07
D917	7798	Porsche	911 S Turbo/4S/Boxster/Cayman	F/ R	2002-07
D917A	7798	Porsche	Ditto (With 2 Clip on WW Sensors TBA)	F/ R	2002-07
D977A	Use 1014A	Porsche	Ditto (With 2 Clip on WW Sensors 6049)	F	2003
D991	7892	Porsche	996 GT2	F	2002-08
D991A	7892	Porsche	Ditto (With 2 Clip on WW Sensors TBA)	F	2002-08
D993	7894	Porsche	996 GT 2	R	2003-06
D993A	7894	Porsche	Ditto (With 2 Clip on WW Sensors TBA)	R	2003-06
D1007	7911	Porsche/Volkswagen	Cayenne 330mm Disc/Touareg	F	2004-08
D978A	7908/7879	Porsche/Volkswagen	Ditto (With 2 Clip on WW Sensors 6050)	R	2003-08
D977	Use 1014	Porsche/VW	Cayenne/Touareg	F	2003-05
D1106	Use 972	Saab	39694	F	2003-08
D1257	8376	Saab	9-3 16" Wheels	F	2003-07
D1257A	8376	Saab	9-3 16" Wheels (With 2 Clip on WW Sensors TBA)	F	2003-07
D321	Use 493	Saab	9000	F	1986
D322	7221	Saab	900/9000	R	1989-98
D403	7292	Saab	9000	F	1989-98
D439	Use 493	Saab	9000	F	1987-93
D644	7522	Saab	900 Series	F	1995-97
D736	7605	Saab	900	F	1997-00
D800	7605	Saab	900/9-3/9-5	F	1999-01
D811	Use 709	Saab	39696	R	1998-99
D936	Use 819	Saab	39696	F	2002-05
D972	7873	Saab	9 - 3 Aero/4 Door/Vector	F	2003-08
D972A	7873	Saab	Ditto (With 2 Clip on WW Sensors TBA)	F	2003-04
D709	7614	Saab/Saturn	9-3/900-/L/LS/LW (FMSI 7614 .583" Friction)	R	2000-05
D819	7605	Saab/Saturn	9-3/9-5/LS/LW	F	2000-05
D1004	7905	Saab/Subaru	9-2X/Forester/Impreza/WRX	R	2004-08
D929	7830/7880	Saab/Subaru	9-2X/Baja/Forester/Impreza/Legacy/Outback	F	2002-08
D1361	8470	Saturn	Astra	F	2008
D1361A	8470	Saturn	Astra (With 2 Clip on WW Sensors TBA)	F	2008



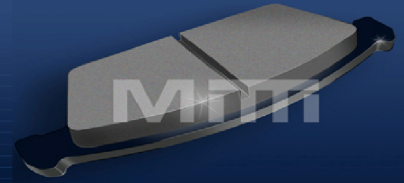
D#	FMSI #	Make	Model	F/R	Year
D507	7386	Saturn	All Models (2 Wear sensors only)	F	1991-94
D507A	7386	Saturn	All Models (4 Wear sensors)	F	1995-01
D508	7387	Saturn	All Models (2 Wear sensors only)	R	1991-04
D508A	7387	Saturn	All Models (4 Wear sensors)	R	1991-04
D728	Use 507	Saturn	All Models	F	1997-01
D956A	7855	Saturn	Ion (Hardware attached)	F	2003-08
D1249	Use 822	Scion	XA/XB	F	2005-07
D1210	8330	Scion/Toyota	XB/XD/RAV-4 2.4L	F	2006-08
D817	7691	Scion/Toyota	Tc/Celica/Celica GTS	F	2000-08
D990	Use 822	Scion/Toyota	XA/XB/Echo/MR2/Prius	F	2003-08
D1252	8370	Smart	City Coupe	F	1998-03
D1004A	7905	Subaru	WRX (With 4 clip on W/S attached)	R	2004-08
D1078	7983	Subaru	Legacy/B9 Tribeca	F	2005-08
D1114	8218	Subaru	Impreza/Legacy 3.0/Outback	R	2004-08
D1124	8231	Subaru	B9 Tribeca	R	2006-08
D1182	8298	Subaru	Impreza WRX	F	2006-07
D470	7350	Subaru	Legacy	F	1990-96
D471	7351	Subaru	Impreza/Legacy/SVX	R	1990-99
D554	Use 333	Subaru	SVX	F	1992-97
D721	7589	Subaru	Baja/Impreza/Legacy	F	1997-03
D722	7590	Subaru	Impreza/Legacy	F	1997-01
D770	7637	Subaru	Baja/Forester/Impreza/Legacy/Outback	R	1998-08
D1001	7919	Subaru/Volvo	Impreza STI/S60/S70/V60/v70 (FMSI 7919/7942 .555" Friction)	F	2004-08
D1105	8211	Suzuki	Grand Vitara/XL-7	F	2005-06
D1188	8307	Suzuki	Grand Vitara	F	2006-07
D1195	8315	Suzuki	Aerio SX	F	2006-07
D1315	7939	Suzuki	Forenza/Reno	R	2007-08
D359	7250	Suzuki	Samurai	F	1986-88
D444	Use 359	Suzuki	Samurai	F	1988-93
D452	Use 357	Suzuki	Swift	F	1989-94
D677	7557	Suzuki	Esteem	F	1995-02
D680	7559	Suzuki	Sidekick/Vitara/Grand Vitara/XL-7	F	1997-05
D937	7839	Suzuki	Aerio	F	2002-06
D1051	7955	Toyota	RAV-4	R	2004-05



D#	FMSI #	Make	Model	F/R	Year
D1052	Use 908	Toyota	Camry (Japanes Production)	F	2004-05
D1184	8301	Toyota	Yaris	F	2006-08
D1211	8331	Toyota	RAV-4 3.5L	F	2006-08
D1222	8331	Toyota	Camry	F	2007
D1324	8436	Toyota	Highlander	F	2008
D1325	8437	Toyota	Highlander	R	2008
D242	7153	Toyota	All models	F	1987-98
D263	7167	Toyota	Van Wagon	F	1989
D302	Use 242	Toyota	Camry/Celica	F	1984-86
D303	7205	Toyota	Pick up trucks	F	1985-87
D355	Use 388	Toyota	Van Wagon	F	1987
D388	7246	Toyota	Van Wagon	F	1987-89
D410	7298	Toyota	4-Runner	F	1989
D433	7320	Toyota	Pick-up 1/2 Ton (FMSI 7320 .600"Friction)	F	1991
D433A	7500/7548	Toyota	Tacoma 2WD (FMSI 7548 .685"Friction)	F	1995-03
D434	7321	Toyota	1 Ton Pick-up with dual rear wheels	F	1989-91
D436	7298	Toyota	Pick-up 1/2 Ton (FMSI 7298 .590"Friction)	F	1989-95
D436A	7459	Toyota	Tacoma 4WD (FMSI 7549 .670"Friction)	F	1995-03
D438	Use 303	Toyota	1 Ton Pick-up 4x2	F	1989-91
D500	7380	Toyota	Previa	F	1991-94
D501	7381	Toyota	Previa	R	1992-97
D502	7298	Toyota	Land Cruiser	F	1991-98
D527	7408	Toyota	Previa	F	1991-97
D528	Use 657	Toyota	MR2	R	1992-05
D539	Use 242	Toyota	Celica	F	1989
D562	7441	Toyota	Camry/RAV-4	F	1992-03
D570	Use 356	Toyota	Celica/Celica GT/GTS	F	1992-94
D589	Use 389	Toyota	Pick-Up	F	1992-95
D605	Use 434	Toyota	T100 1 Ton Pick-up	F	1993-98
D611	7298	Toyota	4-Runner	F	1992-01
D615	Use 500	Toyota	Previa	F	1993-96
D616	Use 527	Toyota	Previa	F	1993-96
D630	7509	Toyota	Supra	R	1993-98
D657	7409	Toyota	MR2	R	1992-95



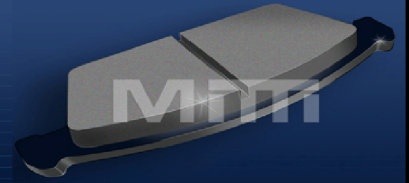
D#	FMSI #	Make	Model	F/R	Year
D672	7553	Toyota	Avalon	R	1995-99
D685	Use 325	Toyota	Celica	R	1996-99
D695	Use 562	Toyota	RAV-4	F	1996-03
D716	Use 527	Toyota	Previa	F	1997
D744	Use 476	Toyota	Sienna	F	1998-00
D799	7671	Toyota	Tacoma	F	1999-02
D812	7687	Toyota	Tundra/Sequoia	F	2000-03
D822	7695	Toyota	Echo/Prius	F	2001-04
D828	7701	Toyota	Avalon/Camry/Solara	R	2000-08
D831	7704	Toyota	Echo	F	2000-01
D846	Use 822	Toyota	Prius	F	2001
D862	7738	Toyota	RAV-4	F	2001-05
D884	7761	Toyota	Highlander	F	2001-07
D884A	7761	Toyota	Highlander (Loose Hardware attached)	F	2001-07
D906A	7896	Toyota	Avalon/Sienna/Tacoma (FMSI 7896 .685" Friction)	F	2004-08
D995	7895	Toyota	Sienna	R	2004-08
D741	7611	Toyota/Chevrolet	Corolla/Prizm	F	1998-02
D476	7357	Toyota/Lexus	Avalon/SC300/LS400	F	1992-96
D697	Use 476	Toyota/Lexus	Camry/Celica/ES300	F	1992-96
D707	7581	Toyota/Lexus	Avalon/Camry/Solara/RX300	F	1997-05
D772	7639	Toyota/Lexus	Land Cruiser/LX470	F	1998-07
D885	7762	Toyota/Lexus	Highlander/Camry/ES300	R	2001-06
D976	7877	Toyota/Lexus	4-Runner/FJ Cruiser/Tacoma/Tundra/Sequoia/GS/GX 470	F	2003-08
D646	Use 701F	UD(Nissan Commercial)	1400	F	1994
D701F	7575	UD(Nissan Commercial)	1400 (SD Fleet Configuration)	F	1994-97
D1007A	7911	Volkswagen	Ditto (With 2 Clip on WW Sensors 6049)	F	2004-08
D1277	8393	Volkswagen	Touareg TDI	R	2007-08
D1277A	8393	Volkswagen	Touareg TDI (With WW Sensor TBA)	R	2007-08
D1348	Use 1108	Volkswagen	Passat 3.6L	R	2008
D227	Use 696	Volkswagen	Jetta GLI/Passat Wagon (FMSI 7177)	F	1990-92
D227A	Use 780	Volkswagen	Passat Syncro/Wagon (FMSI 7143)	F	1991-92
D280	Use 569	Volkswagen	Rabbit/Jetta/Scirocco	F	1986-91
D280A	Use 569A	Volkswagen	Rabbit/Jetta/Scirocco	F	1986-91
D306	Use 228	Volkswagen	Jetta	R	1985-86



D#	FMSI #	Make	Model	F/R	Year
D307	Use 569	Volkswagen	Jetta/Quantum	F	1985-88
D340	7234	Volkswagen	Golf/Jetta/Passat (FMSI 7234 .590" Friction)	R	1988-96
D350	7242	Volkswagen	Fox	F	1987-93
D569	7183	Volkswagen	Golf/Jetta (FMSI 7183 .595" Friction)	F	1985-95
D569A	7209	Volkswagen	Golf/Jetta (FMSI 7209 .765" Friction)	F	1985-95
D581	Use 703	Volkswagen	Eurovan	F	1993-96
D638	7516	Volkswagen	Eurovan	F	1993-97
D638A	7516	Volkswagen	Eurovan (With 1 Attached WW Sensor 6038)	F	1993-97
D684	7571/7572	Volkswagen	Various Models (FMSI 7571 & 7572 .732" Friction)	F	1989-95
D684A	7572	Volkswagen	Ditto (With 2 Attached WW Sensors 6052)	F	1989-95
D694	7569	Volkswagen	Golf/Jetta	F	1998-99
D696	7570	Volkswagen	Various Models (FMSI 7570 .600" Friction)	F	1993-96
D703	7577	Volkswagen	Eurovan (15" Wheels, Vented Rotors)	F	1996-04
D704	7578	Volkswagen	Various Models (FMSI 7578 .600" Friction)	F	1993-96
D706	7580	Volkswagen	Eurovan	R	1996-97
D742	Use 638	Volkswagen	Eurovan	F	1996-97
D768B	7709	Volkswagen	Ditto (With 1 Attached WW Sensor Oval Plug Male 6008)	F	1998-06
D780	7648	Volkswagen	Passat (FMSI 7648 .732" Friction)	F	1998
D808	Use 706	Volkswagen	Eurovan	R	1998-99
D836	Use 736	Volkswagen	Passat	F	2000-01
D852	Use 638	Volkswagen	Eurovan	F	1998-02
D877	7754	Volkswagen	Eurovan	R	1998-99
D877A	7755	Volkswagen	Ditto (With 1 Clip on WW Sensor Per Set 6013)	R	2000-04
D877B	7755	Volkswagen	Ditto (With 2 Clip on WW Sensors Per Set 6013)	R	2000-04
D1003	7904	Volvo	XC 90 3.0 V6 AWD	F	2003-07
D1016	Use 1001	Volvo	S60/S80/V70/XC70	F	2004-07
D1305	8357	Volvo	S80 V8 AWD/V70/XC70	F	2007-08
D1307	8422	Volvo	S80 3.2 FWD/V8 AWD/V70/XC70	R	2007-08
D255	Use 565	Volvo	940/960	F	1993-94
D391	7279	Volvo	S90/V90/850/940/960	R	1991-98
D43	7245	Volvo	DL/GL/240/260 Series	F	1987-93
D541	Use 31	Volvo	S90/V90/740/940/960	R	1991-98
D542	7423	Volvo	Series 740/940/960	F	1990-93
D565	7444	Volvo	740/940/960	F	1991-92

 MITI

Pastillas para Frenos



D#	FMSI #	Make	Model	F/R	Year
D618	7494	Volvo	C70/S70/V70/850Series	F	1993-02
D618A	7494	Volvo	Ditto (With 2 Clip on WW Sensors TBA)	F	1993-02
D634	Use 542	Volvo	Series 940/960/S90/V90	F	1994-98
D783	Use 618	Volvo	C70/S70/V70	F	1998-05
D794	7664	Volvo	S60/S80/V70/XC70	F	1999-08
D795	7665	Volvo	S60/S80/V70/XC70	R	1999-08
D837	7712	Volvo	S40	F	2000-05
D838	7713	Volvo	S40	R	2000-04
D861	Use 31	Volvo	C70/S70/V70/	R	2000-05
D915D	8220	Volvo	C70/S40/V50 With 16.5" Brakes (.700" Friction)(CTD3162 H/W)	F	2005-07
D915E	8220	Volvo	Ditto (With 2 Attached Wire Wear Sensors 6008)	F	2005-07
D979	7882	Volvo	S60/XC 90 2.5T	F	2003-08
D980	7883	Volvo	XC 90	R	2003-08

 MITI